

For Research Use Only

# SLC7A11 Recombinant monoclonal antibody, PBS Only (Detector)

Catalog Number: 82115-4-PBS



## Basic Information

Catalog Number:

82115-4-PBS

Source:

Rabbit

Isotype:

IgG

Immunogen Catalog Number:

AG25431

GenBank Accession Number:

BC012087

GeneID (NCBI):

23657

UNIPROT ID:

Q9UPY5

Full Name:

solute carrier family 7, (cationic amino acid transporter, y+ system) member 11

Calculated MW:

55 kDa

Purification Method:

Protein A purification

CloneNo.:

252789C8

## Applications

Tested Applications:

Sandwich ELISA, Indirect ELISA

Species Specificity:

human

## Background Information

### Storage

Storage:

Store at -80°C.

**The product is shipped with ice packs. Upon receipt, store it immediately at -80°C**

Storage Buffer:

PBS only, pH7.3

For technical support and original validation data for this product please contact:

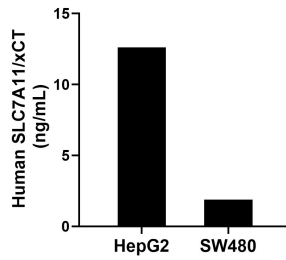
T: 4006900926

E: [Proteintech-CN@ptglab.com](mailto:Proteintech-CN@ptglab.com)

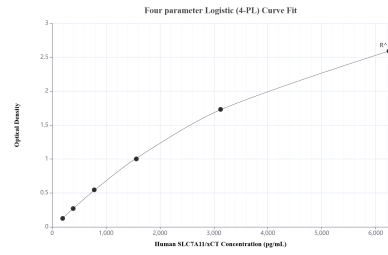
W: [ptgcn.com](http://ptgcn.com)

**This product is exclusively available under Proteintech Group brand and is not available to purchase from any other manufacturer.**

## Selected Validation Data



The mean SLC7A11/xCT concentration was determined to be 12.6 ng/mL in HepG2 cell extract based on a 1.2 mg/mL extract load and 1.9 ng/mL in SW480 cell extract based on a 3.0 mg/mL extract load.



Sandwich ELISA standard curve of MP03119-1, Human SLC7A11/xCT Recombinant Matched Antibody Pair - PBS only. 82115-3-PBS was coated to a plate as the capture antibody and incubated with serial dilutions of standard Ag25431. 82115-4-PBS was HRP conjugated as the detection antibody. Range: 195-6250 pg/mL