

For Research Use Only

# G3BP2 Recombinant antibody, PBS Only (Detector)

Catalog Number: 82080-2-PBS



## Basic Information

Catalog Number:

82080-2-PBS

Size:

1mg/ml

Source:

Rabbit

Isotype:

IgG

Immunogen Catalog Number:

AG9355

GenBank Accession Number:

BC011731

GeneID (NCBI):

9908

UNIPROT ID:

Q9UN86

Full Name:

GTPase activating protein (SH3 domain) binding protein 2

Calculated MW:

482aa, 54 kDa; 449aa, 51 kDa

Purification Method:

Protein A purification

CloneNo.:

230275B2

## Applications

Tested Applications:

Cytometric bead array, Sandwich ELISA, Indirect ELISA, Sample test

Species Specificity:

human

## Background Information

### Storage

Storage:

Store at -80°C.

The product is shipped with ice packs. Upon receipt, store it immediately at -80°C

Storage Buffer:

100% PBS pH 7.3

For technical support and original validation data for this product please contact:

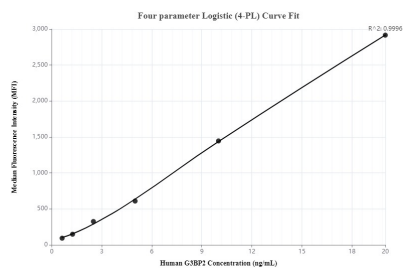
T: 4006900926

E: [Proteintech-CN@ptglab.com](mailto:Proteintech-CN@ptglab.com)

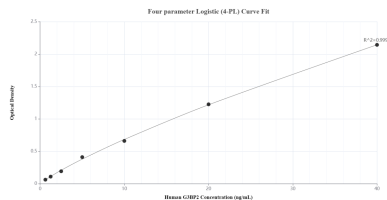
W: [ptgcn.com](http://ptgcn.com)

This product is exclusively available under Proteintech Group brand and is not available to purchase from any other manufacturer.

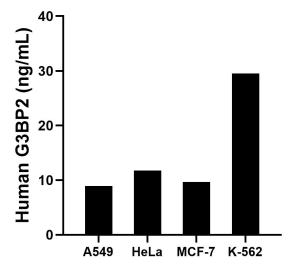
## Selected Validation Data



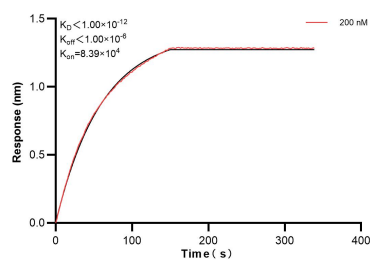
Cytometric bead array standard curve of MP00090-3, G3BP2 Recombinant Matched Antibody Pair, PBS Only. Capture antibody: 82080-4-PBS. Detection antibody: 82080-2-PBS. Standard: Ag9355. Range: 0.625-20 ng/mL.



Sandwich ELISA standard curve of MP00090-3, Human G3BP2 Recombinant Matched Antibody Pair - PBS only. 82080-4-PBS was coated to a plate as the capture antibody and incubated with serial dilutions of standard Ag9355. 82080-2-PBS was HRP conjugated as the detection antibody. Range: 0.625-40 ng/mL.



The mean G3BP2 concentration was determined to be 8.91 ng/mL in A549 cell extract based on a 2.20 mg/mL extract load, 11.75 ng/mL in HeLa cell extract based on a 3.20 mg/mL extract load, 9.66 ng/mL in MCF-7 cell extract based on a 4.30 mg/mL extract load and 29.51 ng/mL in K-562 cell extract based on a 4.50 mg/mL extract load.



Biolayer interferometry (BLI) kinetic assay of 82080-2-PBS against Human G3BP2 was performed. The affinity constant is below 1 pM.