

For Research Use Only

# B23/NPM1 Recombinant antibody, PBS Only



Catalog Number: 82030-1-PBS

## Basic Information

Catalog Number: 82030-1-PBS	GenBank Accession Number: BC002398	Purification Method: Protein A purification
Size: 1mg/ml	GeneID (NCBI): 4869	CloneNo.: 1G4
Source: Rabbit	UNIPROT ID: P06748	
Isotype: IgG	Full Name: nucleophosmin (nucleolar phosphoprotein B23, numatrin)	
Immunogen Catalog Number: AG0286	Calculated MW: 33 kDa	
	Observed MW: 38 kDa	

## Applications

Tested Applications:  
WB, IP, IF, IHC, Indirect ELISA

Species Specificity:  
Human

## Background Information

Nucleophosmin (NPM1,B23) is a putative ribosome assembly factor with a high affinity for peptides containing nuclear localization signals (NLSs). The transport of proteins across the nuclear envelope is a selective, multistep process involving several cytoplasmic factors. Proteins must be recognized as import substrates, dock at the nuclear pore complex and translocate across the nuclear envelope in an ATP-dependent fashion. Several cytosolic and nuclear proteins that are central to this process have been identified. The 38 kDa nuclear protein nucleophosmin is involved in ribosomal assembly and rRNA transport. It is an abundant protein that is highly phosphorylated by Cdc2 kinase during mitosis.

## Storage

Storage:  
Store at -80°C.  
The product is shipped with ice packs. Upon receipt, store it immediately at -80°C

Storage Buffer:  
PBS Only

For technical support and original validation data for this product please contact:

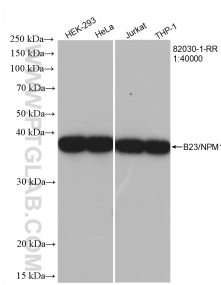
T: 4006900926

E: [Proteintech-CN@ptglab.com](mailto:Proteintech-CN@ptglab.com)

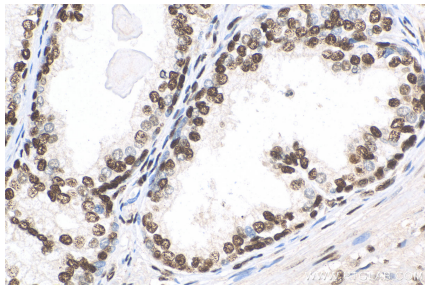
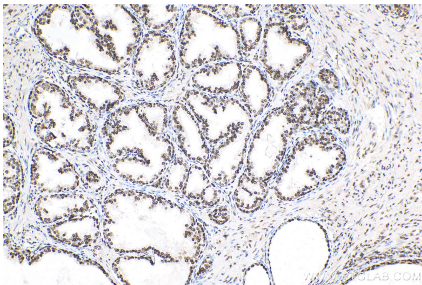
W: [ptgcn.com](http://ptgcn.com)

This product is exclusively available under Proteintech Group brand and is not available to purchase from any other manufacturer.

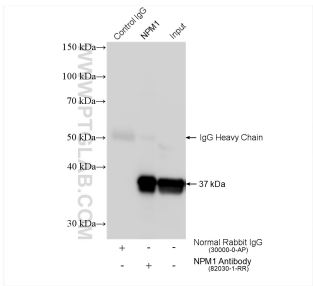
Selected Validation Data



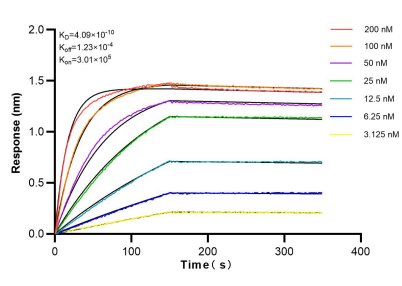
Various lysates were subjected to SDS PAGE followed by western blot with 82030-1-RR (B23 antibody) at dilution of 1:40000 incubated at room temperature for 1.5 hours. This data was developed using the same antibody clone with 82030-1-PBS in a different storage buffer formulation.



Immunofluorescent analysis of (4% PFA) fixed HeLa cells using B23 antibody (82030-1-RR, Clone: 1G4) at dilution of 1:1000 and CoraLite®488-Conjugated AffiniPure Goat Anti-Rabbit IgG(H+L), CL594-Phalloidin (red). This data was developed using the same antibody clone with 82030-1-PBS in a different storage buffer formulation.



IP result of anti-B23/NPM1 (IP:82030-1-RR, 4ug; Detection:82030-1-RR 1:8000) with Jurkat cells lysate 1560 ug. This data was developed using the same antibody clone with 82030-1-PBS in a different storage buffer formulation.



Bilayer interferometry (BLI) kinetic assays of 82030-1-RR against Human B23/NPM1 were performed. The affinity constant is 0.409 nM.