

For Research Use Only

# STAT1 Recombinant antibody

Catalog Number: 82016-1-RR

Featured Product

1 Publications



## Basic Information

**Catalog Number:**

82016-1-RR

**Concentration:**

1000 ug/ml

**Source:**

Rabbit

**Isotype:**

IgG

**Immunogen Catalog Number:**

AG0199

**GenBank Accession Number:**

BC002704

**GeneID (NCBI):**

6772

**UNIPROT ID:**

P42224

**Full Name:**

signal transducer and activator of transcription 1, 91kDa

**Calculated MW:**

83 kDa

**Observed MW:**

84 kDa

**Purification Method:**

Protein A purification

**CloneNo.:**

2F16

**Recommended Dilutions:**

WB 1:5000-1:50000

IP 0.5-4.0 ug for 1.0-3.0 mg of total protein lysate

IHC 1:200-1:800

IF/ICC 1:500-1:2000

## Applications

**Tested Applications:**

WB, IHC, IF/ICC, IP, ELISA

**Cited Applications:**

WB

**Species Specificity:**

human, mouse, rat

**Cited Species:**

human

**Note-IHC: suggested antigen retrieval with TE buffer pH 9.0; (\*) Alternatively, antigen retrieval may be performed with citrate buffer pH 6.0**

**Positive Controls:**

WB : HEK-293 cells, HeLa cells, A549 cells, Jurkat cells, K-562 cells, NIH/3T3 cells, HSC-T6 cells

IP : PC-3 cells,

IHC : human ovary tumor tissue, mouse spleen tissue, mouse colon tissue, rat colon tissue, rat spleen tissue

IF/ICC : IFN alpha treated HeLa cells,

## Background Information

STAT1 (signal transducers and activators of transcription 1) is a member of the STAT protein family. In response to cytokines and growth factors, STAT family members are phosphorylated by the receptor associated kinases, and then form homo- or heterodimers that translocate to the cell nucleus where they act as transcription activators. Various ligands, including interferons- and -, EGF, PDGF and IL-6, can activate STAT1. STAT1 protein mediates the expression of a variety of genes, which is thought to be important for cell viability in response to different cell stimuli and pathogens.

## Notable Publications

Author	Pubmed ID	Journal	Application
Hongjiao Wu	39611047	Noncoding RNA Res	WB

## Storage

**Storage:**

Store at -20°C. Stable for one year after shipment.

**Storage Buffer:**

PBS with 0.02% sodium azide and 50% glycerol pH 7.3.

Aliquoting is unnecessary for -20°C storage

For technical support and original validation data for this product please contact:

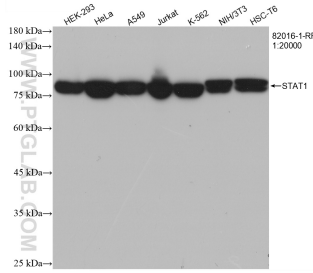
T: 4006900926

E: Proteintech-CN@ptglab.com

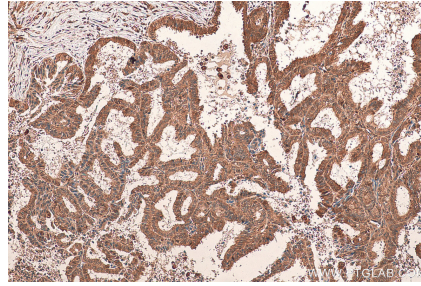
W: ptgcn.com

**This product is exclusively available under Proteintech Group brand and is not available to purchase from any other manufacturer.**

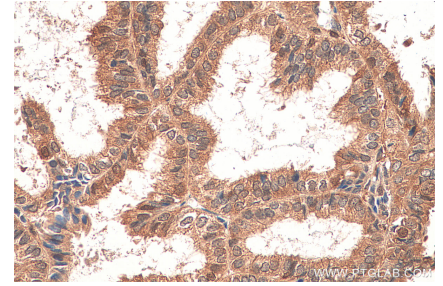
## Selected Validation Data



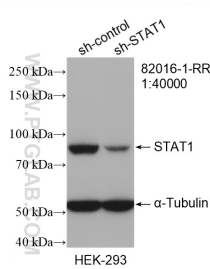
Various lysates were subjected to SDS PAGE followed by western blot with 82016-1-RR (STAT1 antibody) at dilution of 1:20000 incubated at room temperature for 1.5 hours.



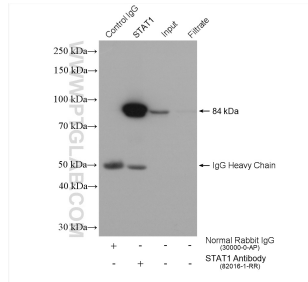
Immunohistochemical analysis of paraffin-embedded human ovary tumor tissue slide using 82016-1-RR (STAT1 antibody) at dilution of 1:400 (under 10x lens). Heat mediated antigen retrieval with Tris-EDTA buffer (pH 9.0).



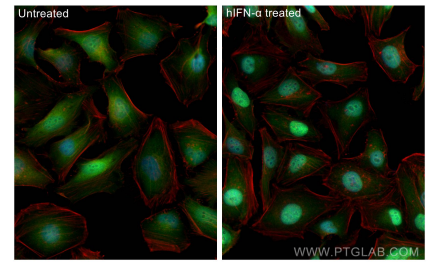
Immunohistochemical analysis of paraffin-embedded human ovary tumor tissue slide using 82016-1-RR (STAT1 antibody) at dilution of 1:400 (under 40x lens). Heat mediated antigen retrieval with Tris-EDTA buffer (pH 9.0).



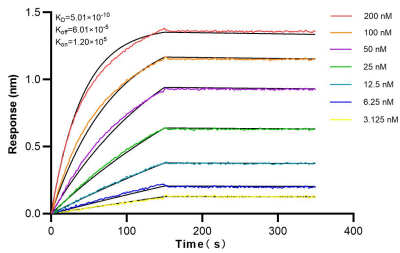
WB result of STAT1 antibody (82016-1-RR; 1:40000; incubated at room temperature for 1.5 hours) with sh-Control and sh-STAT1 transfected HEK-293 cells.



IP result of anti-STAT1 (IP:82016-1-RR, 4ug; Detection:82016-1-RR 1:10000) with PC-3 cells lysate 2000 ug.



Immunofluorescent analysis of (4% PFA) fixed IFN alpha treated HeLa cells using STAT1 antibody (82016-1-RR, Clone: 2F16 ) at dilution of 1:1000 and CoraLite@488-Conjugated Goat Anti-Rabbit IgG(H+L) (SA00013-2), CL594-phalloidin (red).



Biolayer interferometry (BLI) kinetic assays of 82016-1-RR against Human STAT1 were performed. The affinity constant is 0.501 nM.