

Moesin Recombinant antibody

Catalog Number: 82009-1-RR

Featured Product

Basic Information

Catalog Number:

82009-1-RR

Size:

1000 µg/ml

Source:

Rabbit

Isotype:

IgG

Immunogen Catalog Number:

AG9623

GenBank Accession Number:

BC017293

GeneID (NCBI):

4478

UNIPROT ID:

P26038

Full Name:

moesin

Calculated MW:

577 aa, 68 kDa

Observed MW:

68-70 kDa

Purification Method:

Protein A purification

CloneNo.:

3B8

Recommended Dilutions:

WB 1:5000-1:50000

IHC 1:50-1:500

IF/ICC 1:1000-1:4000

Applications

Tested Applications:

WB, IHC, ELISA, IF/ICC

Species Specificity:

Human, mouse, rat

Note-IHC: suggested antigen retrieval with TE buffer pH 9.0; (*) Alternatively, antigen retrieval may be performed with citrate buffer pH 6.0

Positive Controls:

WB: HeLa cells, SGC-7901 cells, NK-92 cells, Jurkat cells, C6 cells, RAW 264.7 cells

IHC: mouse kidney tissue, human placenta tissue

IF/ICC: HepG2 cells,

Background Information

Moesin belongs to the ezrin-radixin-moesin (ERM) family of proteins which act as cross-linkers between membrane and actin cytoskeleton. ERM proteins provide structural links to strengthen the cell cortex and facilitate several key cellular processes, including membrane dynamics, substrate adhesion, cell survival, cell adhesion, and motility. The function of ERM proteins is highly reliant on phosphorylation induced conformational changes in response to growth factor, chemokine, and antigen stimulation. This antibody may cross-react with ezrin or radixin with molecular weights around 68-70 kDa.

Storage

Storage:

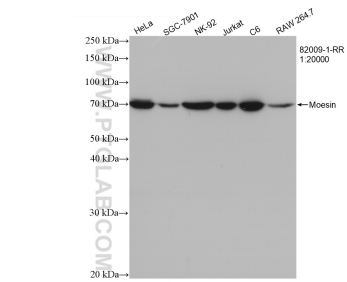
Store at -20°C. Stable for one year after shipment.

Storage Buffer:

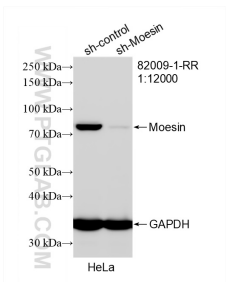
PBS with 0.02% sodium azide and 50% glycerol pH 7.3.

Aliquoting is unnecessary for -20°C storage

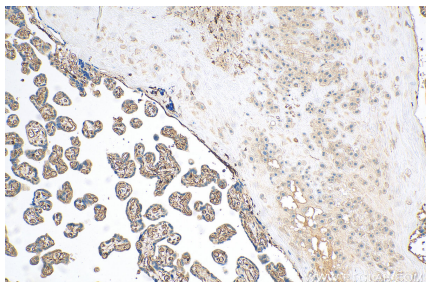
Selected Validation Data



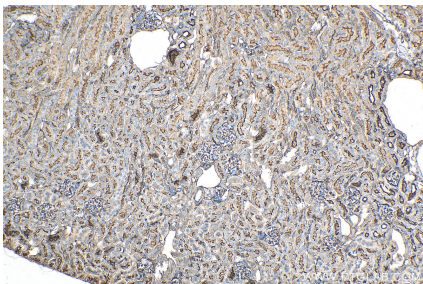
Various lysates were subjected to SDS PAGE followed by western blot with 82009-1-RR (MSN antibody) at dilution of 1:20000 incubated at room temperature for 1.5 hours.



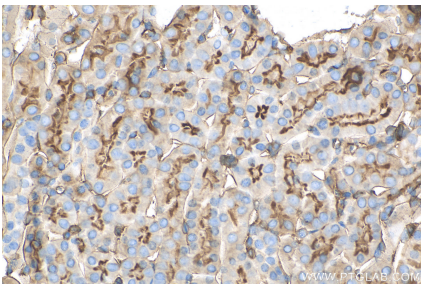
WB result of Moesin antibody (82009-1-RR; 1:12000; incubated at room temperature for 1.5 hours) with sh-Control and sh-Moesin transfected HeLa cells.



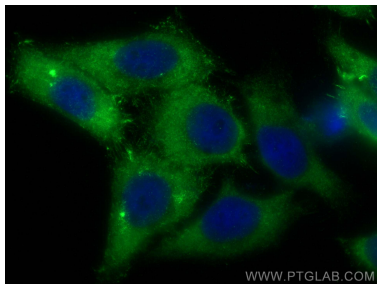
Immunohistochemical analysis of paraffin-embedded human placenta tissue slide using 82009-1-RR (Moesin antibody) at dilution of 1:200 (under 10x lens). Heat mediated antigen retrieval with Tris-EDTA buffer (pH 9.0).



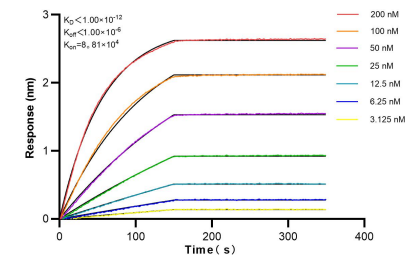
Immunohistochemical analysis of paraffin-embedded mouse kidney tissue slide using 82009-1-RR (Moesin antibody) at dilution of 1:200 (under 10x lens). Heat mediated antigen retrieval with Tris-EDTA buffer (pH 9.0).



Immunohistochemical analysis of paraffin-embedded mouse kidney tissue slide using 82009-1-RR (Moesin antibody) at dilution of 1:200 (under 40x lens). Heat mediated antigen retrieval with Tris-EDTA buffer (pH 9.0).



Immunofluorescent analysis of (-20°C Ethanol) fixed HepG2 cells using Moesin antibody (82009-1-RR, Clone: 3B8) at dilution of 1:2000 and CoraLite@488-Conjugated AffiniPure Goat Anti-Rabbit IgG(H+L).



Biolayer interferometry (BLI) kinetic assays of 82009-1-RR against Human MSN were performed. The affinity constant is below 1 pM.