

For Research Use Only

PINK1 Recombinant antibody, PBS Only (Capture/Detector)

Catalog Number: 81991-5-PBS



Basic Information

Catalog Number: 81991-5-PBS	GenBank Accession Number: BC028215	Purification Method: Protein A purification
Size: 1 mg/ml	GeneID (NCBI): 65018	CloneNo.: 240449G8
Source: Rabbit	UNIPROT ID: Q9BXM7	
Isotype: IgG	Full Name: PTEN induced putative kinase 1	
Immunogen Catalog Number: AG19825	Calculated MW: 581 aa, 63 kDa	

Applications

Tested Applications:
Cytometric bead array, Sandwich ELISA, Indirect ELISA,
Sample test

Species Specificity:
human

Background Information

Storage

Storage:
Store at -80°C.
The product is shipped with ice packs. Upon receipt, store it immediately at -80°C

Storage Buffer:
PBS Only

For technical support and original validation data for this product please contact:

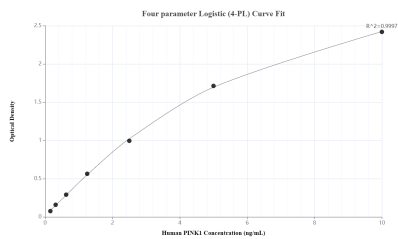
T: 4006900926

E: Proteintech-CN@ptglab.com

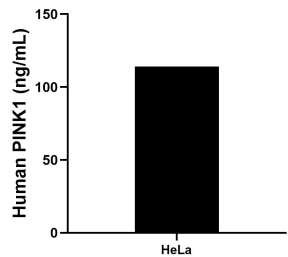
W: ptgcn.com

This product is exclusively available under Proteintech Group brand and is not available to purchase from any other manufacturer.

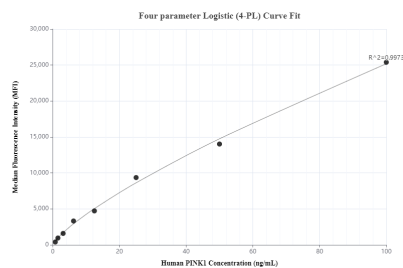
Selected Validation Data



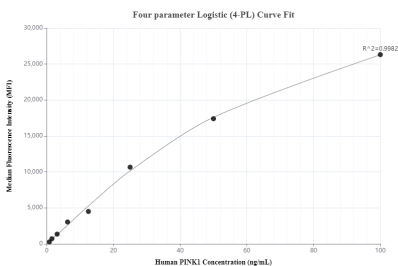
Sandwich ELISA standard curve of MP00404-1, Human PINK1 Recombinant Matched Antibody Pair - PBS only. 81991-2-PBS was coated to a plate as the capture antibody and incubated with serial dilutions of standard Ag19825. 81991-5-PBS was HRP conjugated as the detection antibody. Range: 0.156-10 ng/mL



The mean PINK1 concentration was determined to be 114.07 ng/mL in HeLa cell extract based on a 2.00 mg/mL extract load.



Cytometric bead array standard curve of MP00404-1, PINK1 Recombinant Matched Antibody Pair, PBS Only. Capture antibody: 81991-2-PBS. Detection antibody: 81991-5-PBS. Standard: Ag19825. Range: 0.78-100 ng/mL



Cytometric bead array standard curve of MP00404-2, PINK1 Recombinant Matched Antibody Pair, PBS Only. Capture antibody: 81991-5-PBS. Detection antibody: 81991-3-PBS. Standard: Ag19825. Range: 0.78-100 ng/mL