

For Research Use Only

PINK1 Recombinant antibody, PBS Only (Capture/Detector)

Catalog Number: 81991-2-PBS



Basic Information

Catalog Number:

81991-2-PBS

Size:

1 mg/ml

Source:

Rabbit

Isotype:

IgG

Immunogen Catalog Number:

AG19825

GenBank Accession Number:

BC028215

GeneID (NCBI):

65018

UNIPROT ID:

Q9BXM7

Full Name:

PTEN induced putative kinase 1

Calculated MW:

581 aa, 63 kDa

Purification Method:

Protein A purification

CloneNo.:

240449A2

Applications

Tested Applications:

Cytometric bead array, Sandwich ELISA, Indirect ELISA,
Sample test

Species Specificity:

human

Background Information

Storage

Storage:

Store at -80°C.

The product is shipped with ice packs. Upon receipt, store it immediately at -80°C

Storage Buffer:

PBS Only

For technical support and original validation data for this product please contact:

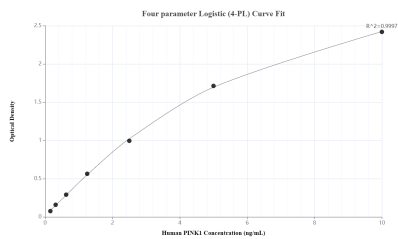
T: 4006900926

E: Proteintech-CN@ptglab.com

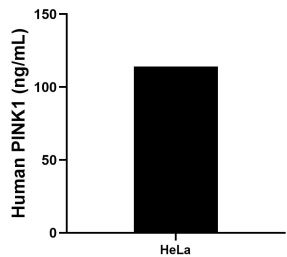
W: ptgcn.com

This product is exclusively available under Proteintech Group brand and is not available to purchase from any other manufacturer.

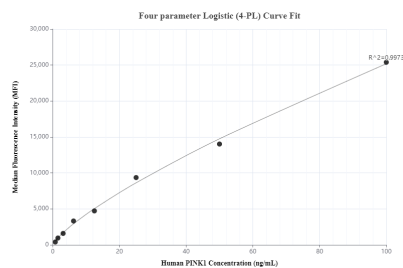
Selected Validation Data



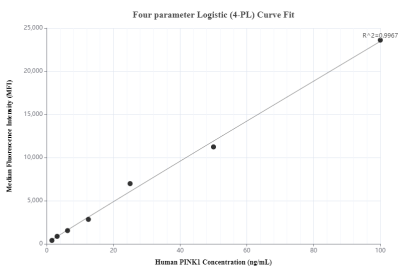
Sandwich ELISA standard curve of MP00404-1, Human PINK1 Recombinant Matched Antibody Pair - PBS only. 81991-2-PBS was coated to a plate as the capture antibody and incubated with serial dilutions of standard Ag19825. 81991-5-PBS was HRP conjugated as the detection antibody. Range: 0.156-10 ng/mL



The mean PINK1 concentration was determined to be 114.07 ng/mL in HeLa cell extract based on a 2.00 mg/mL extract load.



Cytometric bead array standard curve of MP00404-1, PINK1 Recombinant Matched Antibody Pair, PBS Only. Capture antibody: 81991-2-PBS. Detection antibody: 81991-5-PBS. Standard: Ag19825. Range: 0.78-100 ng/mL



Cytometric bead array standard curve of MP00404-3, PINK1 Recombinant Matched Antibody Pair, PBS Only. Capture antibody: 81991-4-PBS. Detection antibody: 81991-2-PBS. Standard: Ag19825. Range: 1.56-100 ng/mL