

For Research Use Only

WTAP Recombinant antibody

Catalog Number: 81987-4-RR



Basic Information

Catalog Number:

81987-4-RR

Concentration:

1000 μ g/ml

Source:

Rabbit

Isotype:

IgG

Immunogen Catalog Number:

AG0259

GenBank Accession Number:

BC000383

GeneID (NCBI):

9589

UNIPROT ID:

Q15007

Full Name:

Wilms tumor 1 associated protein

Calculated MW:

45 kDa

Observed MW:

50 kDa

Purification Method:

Protein A purification

CloneNo.:

250657D4

Recommended Dilutions:

WB: 1:5000-1:50000

IF/ICC: 1:200-1:800

Applications

Tested Applications:

WB, IF/ICC, ELISA

Species Specificity:

human, mouse

Positive Controls:

WB : HeLa cells, HepG2 cells, HEK-293 cells, Jurkat cells, NIH/3T3 cells

IF/ICC : Jurkat cells,

Background Information

WTAP, also named as KIAA0105 and hFL(2)D, is previously identified as a protein associated with Wilms' tumor-1 (WT-1) protein that is essential for the development of the genitourinary system. It is a Pre-mRNA-splicing regulator protein. It is a regulatory subunit of the WMM N6-methyltransferase complex which plays a role in the efficiency of mRNA splicing and processing and mRNA stability. It is required for accumulation of METTL3 and METTL14 to nuclear speckle. MW of WTAP is 45-50 kDa due to phosphorylation.

Storage

Storage:

Store at -20°C. Stable for one year after shipment.

Storage Buffer:

PBS with 0.02% sodium azide and 50% glycerol, pH7.3

Aliquoting is unnecessary for -20°C storage

For technical support and original validation data for this product please contact:

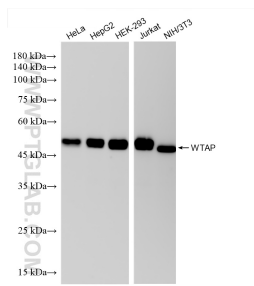
T: 4006900926

E: Proteintech-CN@ptglab.com

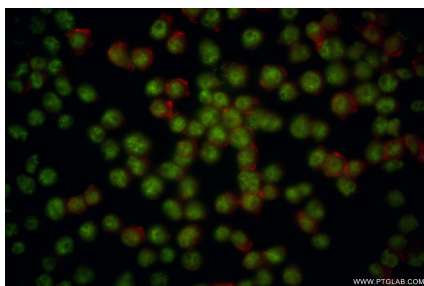
W: ptgcn.com

This product is exclusively available under Proteintech Group brand and is not available to purchase from any other manufacturer.

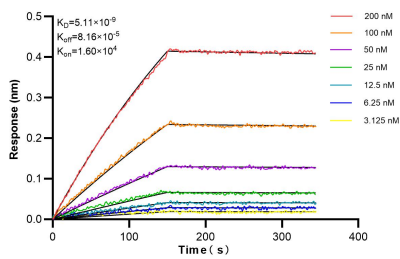
Selected Validation Data



Various lysates were subjected to SDS PAGE followed by western blot with 81987-4-RR (WTAP antibody) at dilution of 1:10000 incubated at room temperature for 1.5 hours.



Immunofluorescent analysis of (4% PFA) fixed Jurkat cells using WTAP antibody (81987-4-RR, Clone: 250657D4) at dilution of 1:500 and CoraLite® 488-Conjugated Goat Anti-Rabbit IgG(H+L) (SA00013-2), CL594-Phalloidin (red).



Biolayer interferometry (BLI) kinetic assays of 81987-4-RR against Human WTAP were performed. The affinity constant is 5.11 nM.