

For Research Use Only

# WTAP Recombinant antibody, PBS Only (Capture)

Catalog Number: 81987-3-PBS



## Basic Information

Catalog Number: 81987-3-PBS	GenBank Accession Number: BC000383	Purification Method: Protein A purification
Concentration: 1 mg/ml	GeneID (NCBI): 9589	CloneNo.: 250657H6
Source: Rabbit	UNIPROT ID: Q15007	
Isotype: IgG	Full Name: Wilms tumor 1 associated protein	
Immunogen Catalog Number: AG0259	Calculated MW: 45 kDa	

## Applications

**Tested Applications:**  
Cytometric bead array, Sandwich ELISA, Indirect ELISA,  
Sample test

**Species Specificity:**  
human

## Background Information

### Storage

**Storage:**  
Store at -80°C.  
**The product is shipped with ice packs. Upon receipt, store it immediately at -80°C**

**Storage Buffer:**  
PBS only, pH7.3

For technical support and original validation data for this product please contact:

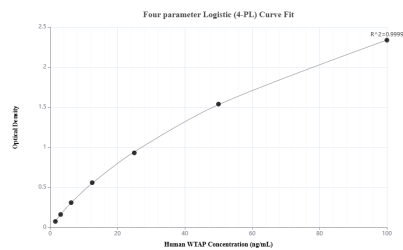
T: 4006900926

E: Proteintech-CN@ptglab.com

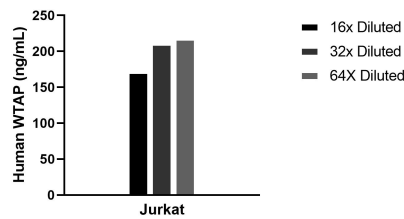
W: ptgcn.com

**This product is exclusively available under Proteintech Group brand and is not available to purchase from any other manufacturer.**

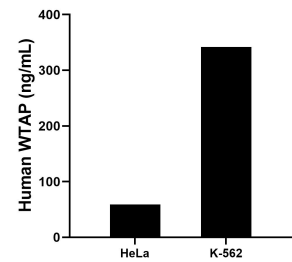
## Selected Validation Data



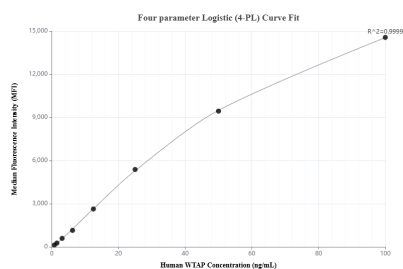
Sandwich ELISA standard curve of MP02241-2, Human WTAP Recombinant Matched Antibody Pair - PBS only. 81987-3-PBS was coated to a plate as the capture antibody and incubated with serial dilutions of standard Ag0259. 81987-5-PBS was HRP conjugated as the detection antibody. Range: 1.56-100 ng/mL



The mean WTAP concentration was determined to be 199.5 ng/mL in Jurkat cell extract based on a 2.2 mg/mL extract load.



The mean WTAP concentration was determined to be 59.04 ng/mL in HeLa cell extract based on a 1.3 mg/mL extract load and 341.94 ng/mL in K-562 cell extract based on a 2.5 mg/mL extract load.



Cytometric bead array standard curve of MP02241-1, WTAP Recombinant Matched Antibody Pair, PBS Only. Capture antibody: 81987-3-PBS. Detection antibody: 81987-2-PBS. Standard: Ag0259. Range: 0.781-100 ng/mL