

For Research Use Only

BIM/BCL2L11 Recombinant monoclonal antibody, PBS Only (Capture)

Catalog Number: 81976-3-PBS



Basic Information

Catalog Number:	81976-3-PBS	GenBank Accession Number:	BC033694	Purification Method:	Protein A purification
Source:	Rabbit	GeneID (NCBI):	10018	CloneNo.:	252250A2
Isotype:	IgG	UNIPROT ID:	O43521		
Immunogen Catalog Number:	AG11875	Full Name:	BCL2-like 11 (apoptosis facilitator)		
		Calculated MW:	198 aa, 22 kDa		
		Observed MW:	16, 23 kDa		

Applications

Tested Applications:
WB, Cytometric bead array, Indirect ELISA

Species Specificity:
human, mouse

Background Information

BIM (BCL2L11) is a central BH3-only apoptosis activator that antagonizes anti-apoptotic BCL-2 proteins and directly triggers BAX/BAK-mediated mitochondrial permeabilization. Induced by cellular stress and cytokine withdrawal, BIM governs developmental cell death, immune tolerance, and tumor suppression. Alterations in BIM expression or splicing-particularly the deletion polymorphism affecting its BH3-only activity-underlie cancer therapy resistance, autoimmune disorders, and neuronal apoptosis.

Storage

Storage:
Store at -80°C.

The product is shipped with ice packs. Upon receipt, store it immediately at -80°C

Storage Buffer:
PBS only, pH7.3

For technical support and original validation data for this product please contact:

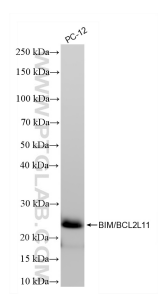
T: 4006900926

E: Proteintech-CN@ptglab.com

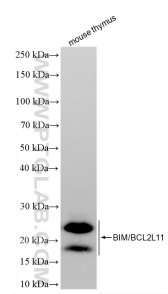
W: ptgcn.com

This product is exclusively available under Proteintech Group brand and is not available to purchase from any other manufacturer.

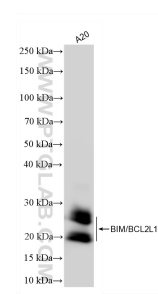
Selected Validation Data



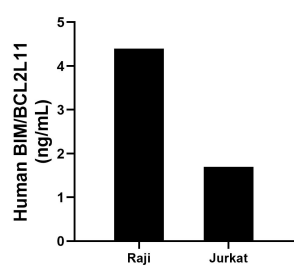
PC-12 cells were subjected to SDS PAGE followed by western blot with 81976-3-RR (BIM, BCL2L11 antibody) at dilution of 1:10000 incubated at room temperature for 1.5 hours. This data was developed using the same antibody clone with 81976-3-PBS in a different storage buffer formulation.



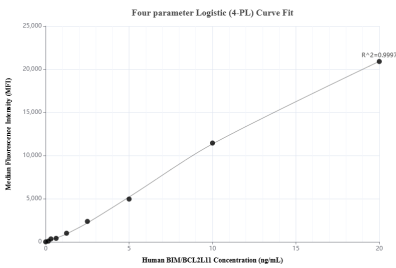
mouse thymus tissue were subjected to SDS PAGE followed by western blot with 81976-3-RR (BIM, BCL2L11 antibody) at dilution of 1:10000 incubated at room temperature for 1.5 hours. This data was developed using the same antibody clone with 81976-3-PBS in a different storage buffer formulation.



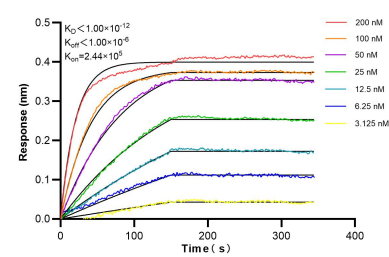
A20 cells were subjected to SDS PAGE followed by western blot with 81976-3-RR (BIM, BCL2L11 antibody) at dilution of 1:10000 incubated at room temperature for 1.5 hours. This data was developed using the same antibody clone with 81976-3-PBS in a different storage buffer formulation.



The mean BIM/BCL2L11 concentration was determined to be 4.4 ng/mL in Raji cell extract based on a 1.3 mg/mL extract load, 1.7 ng/mL in Jurkat cell extract based on a 1.2 mg/mL extract load.



Cytometric bead array standard curve of MP02863-1, BIM/BCL2L11 Recombinant Matched Antibody Pair, PBS Only. Capture antibody: 81976-3-PBS. Detection antibody: 81976-2-PBS. Standard: Ag11875. Range: 0.156-20 ng/mL.



Bi-layer interferometry (BLI) kinetic assays of 81976-3-RR against Human BIM/BCL2L11 were performed. The affinity constant is below 1 pM.