

LDHB Recombinant antibody

Catalog Number: 81963-1-RR

Basic Information

Catalog Number:

81963-1-RR

Size:

500 µg/ml

Source:

Rabbit

Isotype:

IgG

Immunogen Catalog Number:

AG6605

GenBank Accession Number:

BC002362

GeneID (NCBI):

3945

UNIPROT ID:

P07195

Full Name:

lactate dehydrogenase B

Calculated MW:

36 kDa

Observed MW:

35 kDa

Purification Method:

Protein A purification

CloneNo.:

1M20

Recommended Dilutions:

WB 1:20000-1:100000

IP 0.5-4.0 µg for 1.0-3.0 mg of total protein lysate

IF/ICC 1:500-1:2000

Applications

Tested Applications:

WB, IP, ELISA, IF/ICC, FC (Intra)

Species Specificity:

Human, mouse, rat

Positive Controls:**WB :** HeLa cells, HEK-293 cells, DU 145 cells, rat heart tissue, mouse brain tissue, rat brain tissue**IP :** HeLa cells,**IF/ICC :** HeLa cells,

Background Information

LDHB, also named as LDH-H and NY-REN-46, belongs to the LDH/MDH superfamily. And LDH family. It is an enzyme which catalyzes the reversible conversion of pyruvate and NADH to lactate and NAD⁺ in the glycolytic pathway. LDH comprises LDHA and LDHB, two subunits that are encoded by independent genes. In muscle or liver, most of the LDH is composed of four LDHA subunits, and preferably catalyzes the reduction of pyruvate to lactate. In heart and brain, LDH is mainly composed of four LDHB subunits, and predominantly catalyzes the oxidation of lactate to pyruvate. In other tissues, LDH is composed of both LDHA and LDHB. (PMID: 26269128, 31804482)

Storage

Storage:

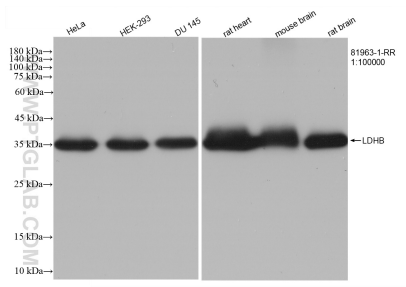
Store at -20°C. Stable for one year after shipment.

Storage Buffer:

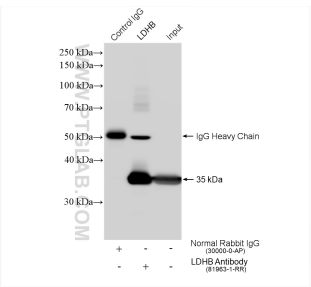
PBS with 0.02% sodium azide and 50% glycerol pH 7.3.

Aliquoting is unnecessary for -20°C storage

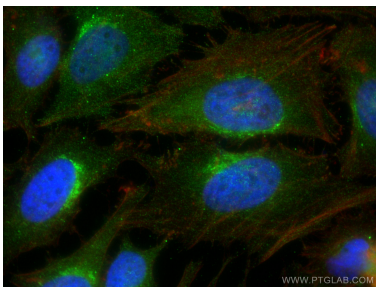
Selected Validation Data



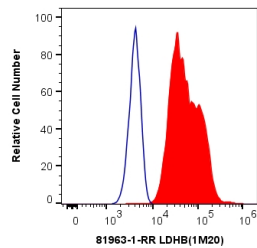
Various lysates were subjected to SDS PAGE followed by western blot with 81963-1-RR (LDHB antibody) at dilution of 1:100000 incubated at room temperature for 1.5 hours.



IP result of anti-LDHB (IP:81963-1-RR, 4ug; Detection:81963-1-RR 1:50000) with HeLa cells lysate 2000 ug.



Immunofluorescent analysis of (4% PFA) fixed HeLa cells using LDHB antibody (81963-1-RR, Clone: 1M20) at dilution of 1:1000 and CoraLite®488-Conjugated AffiniPure Goat Anti-Rabbit IgG(H+L), CL594-Phalloidin (red).



1X10⁶ HeLa cells were intracellularly stained with 0.4 ug Anti-Human LDHB (81963-1-RR, Clone:1M20) and CoraLite®488-Conjugated AffiniPure Goat Anti-Rabbit IgG(H+L) at dilution 1:1000 (red), or 0.4 ug Isotype Control. Cells were fixed with 4% PFA and permeabilized with Flow Cytometry Perm Buffer (PF00011-C).