

For Research Use Only

GP73/GOLPH2 Recombinant antibody



Catalog Number: 81893-1-RR

Basic Information

Catalog Number: 81893-1-RR	GenBank Accession Number: BC001740	Purification Method: Protein A purification
Size: 500 µg/ml	GeneID (NCBI): 51280	CloneNo.: 1112
Source: Rabbit	UNIPROT ID: Q8NBJ4	Recommended Dilutions: WB 1:5000-1:50000 IF 1:450-1:1800
Isotype: IgG	Full Name: golgi membrane protein 1	
Immunogen Catalog Number: AG7207	Calculated MW: 45 kDa	
	Observed MW: 70-75 kDa	

Applications

Tested Applications: IF/ICC, WB, ELISA	Positive Controls: WB : HEK-293 cells, HeLa cells, MCF-7 cells IF : HeLa cells,
Species Specificity: Human	

Background Information

Golgi phosphoprotein 2 (GOLPH2, also known as GP73 or GOLM1) is a resident Golgi type-II membrane protein. It is predominantly expressed in the epithelial cells of many human tissues. GOLPH2 traffics through endosomes and can be secreted into the circulation. Its expression is upregulated in a number of tumors and GOLPH2 could be a promising serum marker for hepatocellular carcinoma. We got 70-75 kDa in western blotting due to phosphorylation.

Storage

Storage:
Store at -20°C. Stable for one year after shipment.
Storage Buffer:
PBS with 0.02% sodium azide and 50% glycerol pH 7.3.
Aliquoting is unnecessary for -20°C storage

For technical support and original validation data for this product please contact:

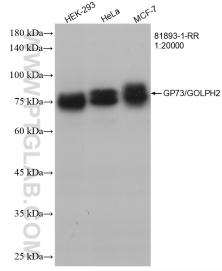
T: 4006900926

E: Proteintech-CN@ptglab.com

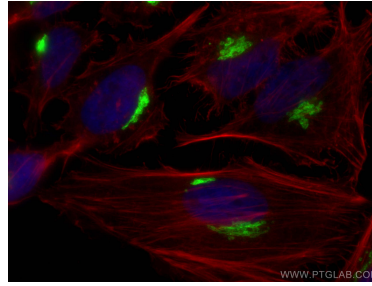
W: ptgcn.com

This product is exclusively available under Proteintech Group brand and is not available to purchase from any other manufacturer.

Selected Validation Data



Various lysates were subjected to SDS PAGE followed by western blot with 81893-1-RR (GP73/GOLPH2 antibody) at dilution of 1:20000 incubated at room temperature for 1.5 hours.



Immunofluorescent analysis of (4% PFA) fixed HeLa cells using GP73/GOLPH2 antibody (81893-1-RR, Clone: 1112) at dilution of 1:900 and CoraLite®488-Conjugated AffiniPure Goat Anti-Rabbit IgG(H+L), CL594-Phalloidin (red).