

For Research Use Only

Phospho-CREB1 (Ser133) Recombinant antibody, PBS Only

Catalog Number: 81871-1-PBS



Basic Information

| | | | | | |
|-----------------|-------------|---------------------------|---|----------------------|------------------------|
| Catalog Number: | 81871-1-PBS | GenBank Accession Number: | BC010636 | Purification Method: | Protein A purification |
| Size: | 1 mg/ml | GeneID (NCBI): | 1385 | CloneNo.: | 5H5 |
| Source: | Rabbit | UNIPROT ID: | P16220 | | |
| Isotype: | IgG | Full Name: | cAMP responsive element binding protein 1 | | |
| | | Calculated MW: | 341 aa, 35 kDa | | |
| | | Observed MW: | 35-46 kDa | | |

Applications

Tested Applications:
WB, IHC, Indirect ELISA

Species Specificity:
human, mouse

Background Information

The cAMP-response element binding protein (CREB) is localized in the nucleus and acts as a transcription factor, which binds to the cAMP response element (CRE) of the promoters of its target genes, upon phosphorylation at Ser133 by different receptor-activated protein kinases, such as protein kinase A (PKA), calmodulin-dependent protein kinase (CaMK), mitogen-activated protein kinases (MAPK), and other kinases. The activity of CREB1 in neurons has been correlated with various intracellular processes, including proliferation, differentiation, survival, long-term synaptic potentiation, neurogenesis, and neuronal plasticity. CREB1 belongs to the CREB/activating transcription factor (ATF) family of transcription factors. The antibody also detects the phosphorylated form of the CREB-related protein ATF1. (PMID: 30214393, PMID: 33917483, PMID: 32605164)

Storage

Storage:
Store at -80°C.
The product is shipped with ice packs. Upon receipt, store it immediately at -80°C

Storage Buffer:
PBS Only

For technical support and original validation data for this product please contact:

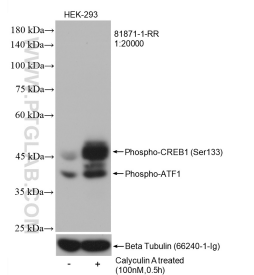
T: 4006900926

E: Proteintech-CN@ptglab.com

W: ptgcn.com

This product is exclusively available under Proteintech Group brand and is not available to purchase from any other manufacturer.

Selected Validation Data



Non-treated and Calyculin A treated HEK-293 cells were subjected to SDS PAGE followed by western blot with 81871-1-RR (Phospho-CREB1 (Ser133) antibody) at dilution of 1:20000 incubated at room temperature for 1 hours. The membrane was stripped and re-blotted with Beta-tubulin antibody as loading control. This data was developed using the same antibody clone with 81871-1-PBS in a different storage buffer formulation.

