

For Research Use Only

IBA1 Recombinant antibody, PBS Only

Catalog Number: 81728-1-PBS



Basic Information

Catalog Number:	81728-1-PBS	GenBank Accession Number:	BC009474	Purification Method:	Protein A purification
Concentration:	1mg/ml	GeneID (NCBI):	199	CloneNo.:	4D5
Source:	Rabbit	ENSEMBL Gene ID:	ENSG00000204472		
Isotype:	IgG	UNIPROT ID:	P55008		
Immunogen Catalog Number:	AG1363	Full Name:	allograft inflammatory factor 1		
		Calculated MW:	17 kDa		
		Observed MW:	17 kDa		

Applications

Tested Applications:
WB, IHC, IF-P, FC (Intra), Indirect ELISA

Species Specificity:
human, mouse, rat

Background Information

IBA1 is a 143 amino acid cytoplasmic, inflammation response scaffold protein. It is constitutively expressed in monocytes and macrophages and is known to be involved in macrophage activation. It is a marker of activated macrophage. Expression of IBA1 is up-regulated in activated microglia following facial nerve axotomy, ischemia, and several brain diseases, thereby implicating it in the activated phenotypes of microglia.

Storage

Storage:
Store at -80°C.
The product is shipped with ice packs. Upon receipt, store it immediately at -80°C

Storage Buffer:
PBS only, pH7.3

For technical support and original validation data for this product please contact:

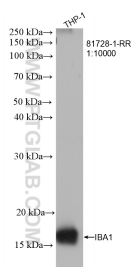
T: 4006900926

E: Proteintech-CN@ptglab.com

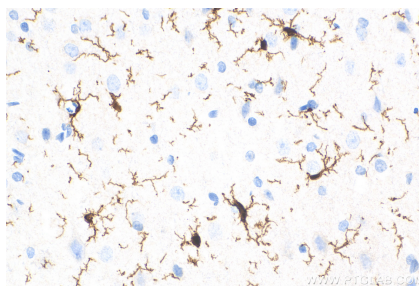
W: ptgcn.com

This product is exclusively available under Proteintech Group brand and is not available to purchase from any other manufacturer.

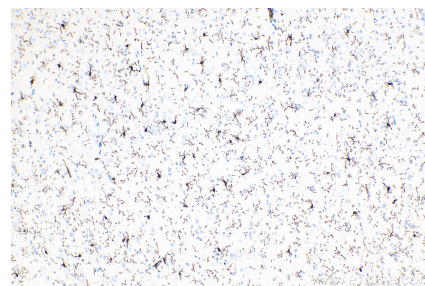
Selected Validation Data



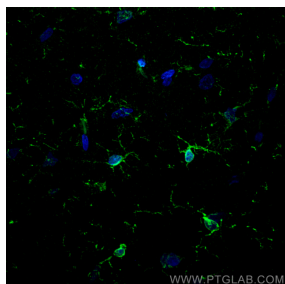
THP-1 cells were subjected to SDS PAGE followed by western blot with 81728-1-RR (IBA1 antibody) at dilution of 1:10000 incubated at room temperature for 1.5 hours. This data was developed using the same antibody clone with 81728-1-PBS in a different storage buffer formulation.



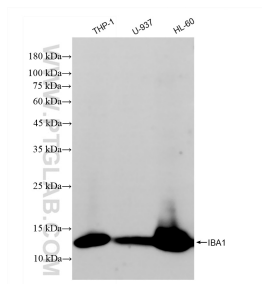
Immunohistochemical analysis of paraffin-embedded rat brain tissue slide using 81728-1-RR (IBA1 antibody) at dilution of 1:1000 (under 40x lens). Heat mediated antigen retrieval with Tris-EDTA buffer (pH 9.0). This data was developed using the same antibody clone with 81728-1-PBS in a different storage buffer formulation.



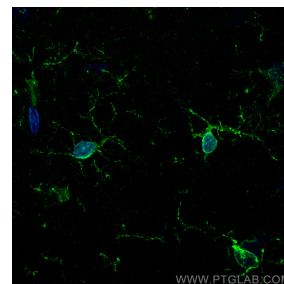
Immunohistochemical analysis of paraffin-embedded rat brain tissue slide using 81728-1-RR (IBA1 antibody) at dilution of 1:1000 (under 10x lens). Heat mediated antigen retrieval with Tris-EDTA buffer (pH 9.0). This data was developed using the same antibody clone with 81728-1-PBS in a different storage buffer formulation.



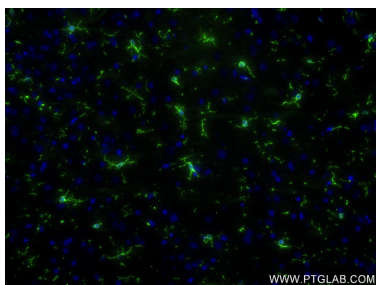
Immunofluorescent analysis of (4% PFA) fixed rat brain tissue using IBA1 antibody (81728-1-RR, Clone: 4D5) at dilution of 1:500 and CoraLite®488-Conjugated AffiniPure Goat Anti-Rabbit IgG(H+L). This data was developed using the same antibody clone with 81728-1-PBS in a different storage buffer formulation.



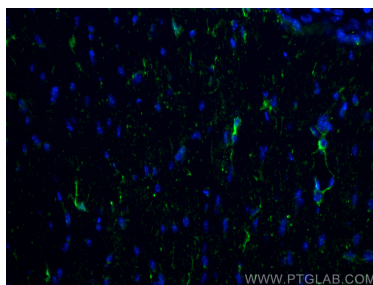
Various lysates were subjected to SDS PAGE followed by western blot with 81728-1-RR (IBA1 antibody) at dilution of 1:10000 incubated at room temperature for 1.5 hours. This data was developed using the same antibody clone with 81728-1-PBS in a different storage buffer formulation.



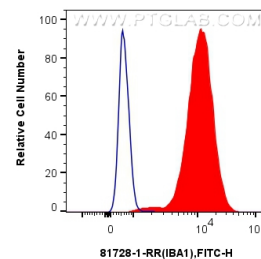
Immunofluorescent analysis of (4% PFA) fixed rat brain tissue using IBA1 antibody (81728-1-RR, Clone: 4D5) at dilution of 1:500 and CoraLite®488-Conjugated AffiniPure Goat Anti-Rabbit IgG(H+L). This data was developed using the same antibody clone with 81728-1-PBS in a different storage buffer formulation.



Immunofluorescent analysis of (4% PFA) fixed paraffin-embedded rat brain tissue using IBA1 antibody (81728-1-RR, Clone: 4D5) at dilution of 1:250 and CoraLite®488-Conjugated Goat Anti-Rabbit IgG(H+L) (SA00013-2). Heat mediated antigen retrieval with Tris-EDTA buffer (pH 9.0). This data was developed using the same antibody clone with 81728-1-PBS in a different storage buffer formulation.



Immunofluorescent analysis of (4% PFA) fixed frozen OCT-embedded mouse brain tissue using IBA1 antibody (81728-1-RR, Clone: 4D5) at dilution of 1:400 and CoraLite®488-Conjugated AffiniPure Goat Anti-Rabbit IgG(H+L) (SA00013-2). This data was developed using the same antibody clone with 81728-1-PBS in a different storage buffer formulation.



1×10^6 THP-1 cells were intracellularly stained with 0.4 ug IBA1 Recombinant antibody (81728-1-RR, Clone:4D5) and CoraLite®488-Conjugated AffiniPure Goat Anti-Rabbit IgG(H+L) (SA00013-2) (red), or 0.4 ug Isotype Control (blue). Cells were fixed with 4% PFA and permeabilized with Flow Cytometry Perm Buffer (PF00011-C). This data was developed using the same antibody clone with 81728-1-PBS in a different storage buffer formulation.