

For Research Use Only

# Mouse F4/80 Recombinant antibody, PBS Only

Catalog Number: 81668-1-PBS



## Basic Information

<b>Catalog Number:</b> 81668-1-PBS	<b>GenBank Accession Number:</b> NM_010130	<b>Purification Method:</b> Protein A purification
<b>Size:</b> 1mg/ml	<b>GeneID (NCBI):</b> 13733	<b>CloneNo.:</b> 2P18
<b>Source:</b> Rabbit	<b>UNIPROT ID:</b> Q61549	
<b>Isotype:</b> IgG	<b>Full Name:</b> EGF-like module containing, mucin-like, hormone receptor-like sequence	
<b>Immunogen Catalog Number:</b> AG28252	<b>1</b>	
	<b>Calculated MW:</b> 102 kDa	

## Applications

**Tested Applications:**  
IHC, IF/ICC, IF-P, IF-Fro, Indirect ELISA

**Species Specificity:**  
mouse

## Background Information

Mouse F4/80, also named as EMR1 and Gpf480, is a 160kd cell surface glycoprotein which is a member of the EGF TM7 family. The F4/80 molecule is solely expressed on the surface of macrophages and serves as a marker for mature macrophage tissues, including Kupffer cells in liver, splenic red pulp macrophages, brain microglia, gut lamina propria and Langerhans cells in the skin. The function of F4/80 is unclear, but it is speculated to be involved in macrophage adhesion events, cell migration or as a G protein-coupled signaling component of macrophages.

## Storage

**Storage:**  
Store at -80°C.  
**The product is shipped with ice packs. Upon receipt, store it immediately at -80°C**

**Storage Buffer:**  
PBS Only

For technical support and original validation data for this product please contact:

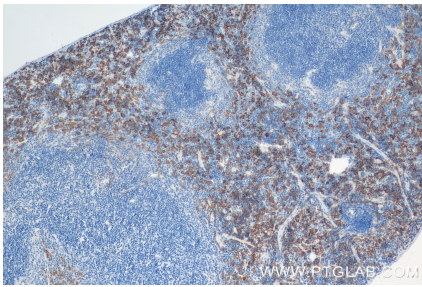
T: 4006900926

E: Proteintech-CN@ptglab.com

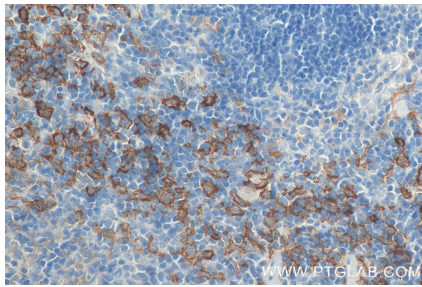
W: ptgcn.com

**This product is exclusively available under Proteintech Group brand and is not available to purchase from any other manufacturer.**

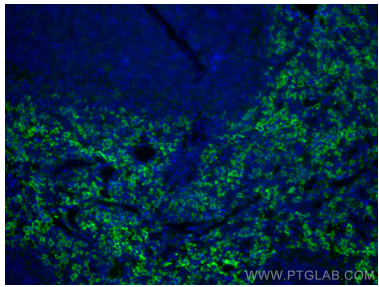
## Selected Validation Data



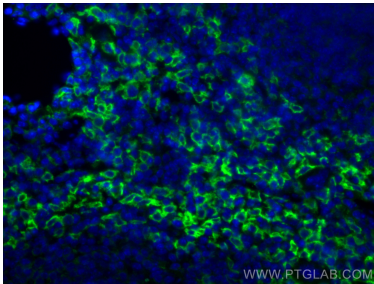
Immunohistochemical analysis of paraffin-embedded mouse spleen tissue slide using 81668-1-RR (F4/80 antibody) at dilution of 1:2000 (under 10x lens). Heat mediated antigen retrieval with Tris-EDTA buffer (pH 9.0). This data was developed using the same antibody clone with 81668-1-PBS in a different storage buffer formulation.



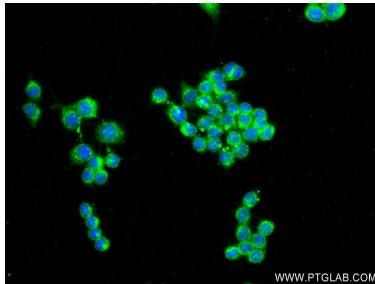
Immunohistochemical analysis of paraffin-embedded mouse spleen tissue slide using 81668-1-RR (F4/80 antibody) at dilution of 1:2000 (under 40x lens). Heat mediated antigen retrieval with Tris-EDTA buffer (pH 9.0). This data was developed using the same antibody clone with 81668-1-PBS in a different storage buffer formulation.



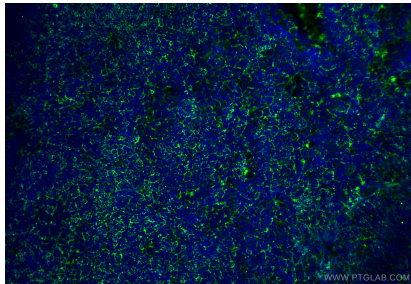
Immunofluorescent analysis of (4% PFA) fixed mouse spleen tissue using F4/80 antibody (81668-1-RR, Clone: 2P18 ) at dilution of 1:1500 and CoraLite®488-Conjugated AffiniPure Goat Anti-Rabbit IgG(H+L). This data was developed using the same antibody clone with 81668-1-PBS in a different storage buffer formulation.



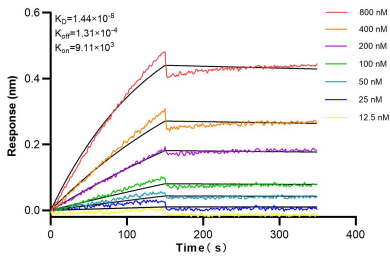
Immunofluorescent analysis of (4% PFA) fixed mouse spleen tissue using F4/80 antibody (81668-1-RR, Clone: 2P18 ) at dilution of 1:1500 and CoraLite®488-Conjugated AffiniPure Goat Anti-Rabbit IgG(H+L). This data was developed using the same antibody clone with 81668-1-PBS in a different storage buffer formulation.



Immunofluorescent analysis of (-20°C Ethanol) fixed RAW 264.7 cells using F4/80 antibody (81668-1-RR, Clone: 2P18 ) at dilution of 1:250 and CoraLite®488-Conjugated AffiniPure Goat Anti-Rabbit IgG(H+L) (SA00013-2). This data was developed using the same antibody clone with 81668-1-PBS in a different storage buffer formulation.



Immunofluorescent analysis of (4% PFA) fixed frozen OCT-embedded mouse spleen tissue using F4/80 antibody (81668-1-RR, Clone: 2P18 ) at dilution of 1:200 and CoraLite®488-Conjugated Goat Anti-Rabbit IgG(H+L) (SA00013-2). This data was developed using the same antibody clone with 81668-1-PBS in a different storage buffer formulation.



Biolayer interferometry (BLI) kinetic assays of 81668-1-RR against Mouse F4/80 were performed. The affinity constant is 14.4 nM.