

For Research Use Only

Phospho-TSC2 (Ser939) Recombinant antibody, PBS Only

Catalog Number: 81654-1-PBS



Basic Information

Catalog Number:

81654-1-PBS

Concentration:

1 mg/ml

Source:

Rabbit

Isotype:

IgG

GenBank Accession Number:

BC150300

GeneID (NCBI):

7249

UNIPROT ID:

P49815

Full Name:

tuberous sclerosis 2

Calculated MW:

1807 aa, 201 kDa

Observed MW:

200 kDa

Purification Method:

Protein A purification

CloneNo.:

2B18

Applications

Tested Applications:

WB, FC (Intra), Indirect ELISA

Species Specificity:

human

Background Information

TSC2, also named Tuberin, plays an essential role in the cellular energy response pathway. TSC2 forms a physical and functional complex with TSC1 that can inhibit the nutrient-mediated or growth factor-stimulated phosphorylation of S6K1 and EIF4EBP1 by negatively regulating mTORC1 signaling. Tuberin is phosphorylated on Ser939 and Thr1462 in response to PI3K activation and the human TSC complex is a direct biochemical target of the PI3K/Akt pathway (PMID: 12150915).

Storage

Storage:

Store at -80°C.

The product is shipped with ice packs. Upon receipt, store it immediately at -80°C

Storage Buffer:

PBS Only

For technical support and original validation data for this product please contact:

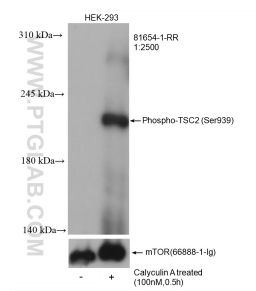
T: 4006900926

E: Proteintech-CN@ptglab.com

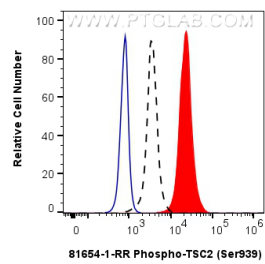
W: ptgcn.com

This product is exclusively available under Proteintech Group brand and is not available to purchase from any other manufacturer.

Selected Validation Data



Non-treated and Calyculin A treated HEK-293 cells were subjected to SDS PAGE followed by western blot with 81654-1-RR (Phospho-TSC2 (Ser939) antibody) at dilution of 1:2500 incubated at room temperature for 1.5 hours. The membrane was stripped and re-blotted with mTOR antibody (66888-1-Ig) as the loading control. This data was developed using the same antibody clone with 81654-1-PBS in a different storage buffer formulation.



1X10⁶ HEK-293 cells untreated (dashed lines) or treated with Calyculin A were intracellularly stained with 0.06 ug Phospho-TSC2 (Ser939) Recombinant antibody (81654-1-RR, Clone:2B18) and CoraLite®488-Conjugated Goat Anti-Rabbit IgG(H+L) (SA00013-2)(red), or 0.06 ug Rabbit IgG Isotype Control Recombinant Antibody (98136-1-RR, Clone: 240953C9) (blue). Cells were fixed with 4% PFA and permeabilized with 90% MeOH. This data was developed

