

For Research Use Only

ECHS1 Recombinant antibody

Catalog Number: 81611-1-RR



Basic Information

| | | |
|--|--|---|
| Catalog Number: 81611-1-RR | GenBank Accession Number: BC008906 | Purification Method: Protein A purification |
| Size: 1000 µg/ml | GeneID (NCBI): 1892 | CloneNo.: 5G5 |
| Source: Rabbit | UNIPROT ID: P30084 | Recommended Dilutions: WB 1:5000-1:50000 IHC 1:500-1:2000 IF 1:500-1:2000 |
| Isotype: IgG | Full Name: enoyl Coenzyme A hydratase, short chain, 1, mitochondrial | |
| Immunogen Catalog Number: AG1842 | Calculated MW: 31 kDa | |
| | Observed MW: 30 kDa | |

Applications

Tested Applications:
IF/ICC, IHC, WB, ELISA

Species Specificity:
Human, Mouse, Rat

Note-IHC: suggested antigen retrieval with TE buffer pH 9.0; (*) Alternatively, antigen retrieval may be performed with citrate buffer pH 6.0

Positive Controls:

WB: HeLa cells, mouse liver tissue, L02 cells, Caco-2 cells, MCF-7 cells, HepG2 cells, HEK-293 cells, PC-3 cells, rat liver tissue

IHC: human prostate cancer tissue,

IF: HeLa cells,

Background Information

Enoyl-coenzyme A hydratase (ECHS1) is a mitochondrial protein which catalyzes the hydration of 2-trans-enoyl-coenzyme A intermediates to L-3-hydroxyacyl-coenzyme A, playing a key role in metabolism of fatty acids in mitochondria. ECHS1 is highly expressed in muscle, liver and fibroblasts. Altered expression of ECHS1 has been considered a characteristic feature of mitochondria dysfunction. (23275097, 23235493)

Storage

Storage:

Store at -20°C. Stable for one year after shipment.

Storage Buffer:

PBS with 0.02% sodium azide and 50% glycerol pH 7.3.

Aliquoting is unnecessary for -20°C storage

For technical support and original validation data for this product please contact:

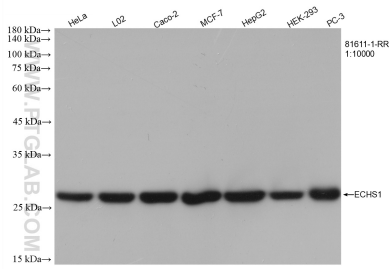
T: 4006900926

E: Proteintech-CN@ptglab.com

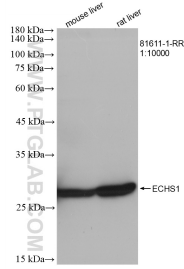
W: ptgcn.com

This product is exclusively available under Proteintech Group brand and is not available to purchase from any other manufacturer.

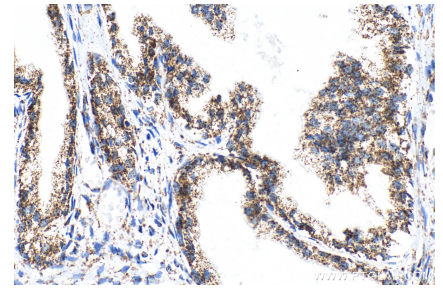
Selected Validation Data



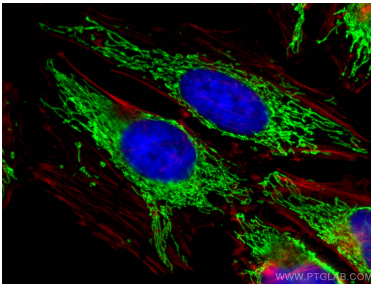
Various lysates were subjected to SDS PAGE followed by western blot with 81611-1-RR (ECHS1 antibody) at dilution of 1:10000 incubated at room temperature for 1.5 hours.



Various lysates were subjected to SDS PAGE followed by western blot with 81611-1-RR (ECHS1 antibody) at dilution of 1:10000 incubated at room temperature for 1.5 hours.



Immunohistochemical analysis of paraffin-embedded human prostate cancer tissue slide using 81611-1-RR (ECHS1 antibody) at dilution of 1:1000 (under 40x lens). Heat mediated antigen retrieval with Tris-EDTA buffer (pH 9.0).



Immunofluorescent analysis of (4% PFA) fixed HeLa cells using ECHS1 antibody (81611-1-RR, Clone: 5G5) at dilution of 1:1000 and CoraLite®488-Conjugated AffiniPure Goat Anti-Rabbit IgG(H+L), CL594-phalloidin (red).