

For Research Use Only

MMP2 Recombinant antibody, PBS Only (Detector)

Catalog Number: 81515-3-PBS



Basic Information

Catalog Number:

81515-3-PBS

Concentration:

1 mg/ml

Source:

Rabbit

Isotype:

IgG

Immunogen Catalog Number:

EG1650

GenBank Accession Number:

BC002576

GeneID (NCBI):

4313

UNIPROT ID:

P08253

Full Name:

matrix metalloproteinase 2
(gelatinase A, 72kDa gelatinase,
72kDa type IV collagenase)

Calculated MW:

72 kDa

Purification Method:

Protein A purification

CloneNo.:

250316D7

Applications

Tested Applications:

Cytometric bead array, Indirect ELISA, Sample test

Species Specificity:

human

Background Information

Storage

Storage:

Store at -80°C.

The product is shipped with ice packs. Upon receipt, store it immediately at -80°C

Storage Buffer:

PBS only, pH7.3

For technical support and original validation data for this product please contact:

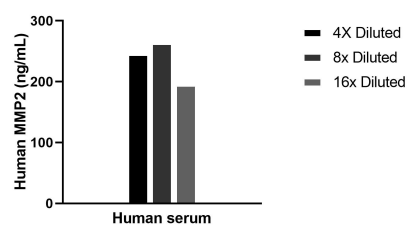
T: 4006900926

E: Proteintech-CN@ptglab.com

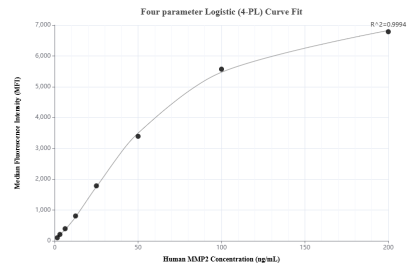
W: ptgcn.com

This product is exclusively available under Proteintech Group brand and is not available to purchase from any other manufacturer.

Selected Validation Data



The mean MMP2 concentration was determined to be 234.5 ng/mL in human serum.



Cytometric bead array standard curve of MP02255-1, MMP2 Recombinant Matched Antibody Pair, PBS Only. Capture antibody: 81515-4-PBS. Detection antibody: 81515-3-PBS. Standard: Eg1650. Range: 1.563-200 ng/mL.