

For Research Use Only

GLS Recombinant antibody

Catalog Number: 81486-1-RR



Basic Information

Catalog Number: 81486-1-RR	GenBank Accession Number: BC038507	Purification Method: Protein A purification
Size: 1000 µg/ml	GeneID (NCBI): 2744	CloneNo.: 4C20
Source: Rabbit	UNIPROT ID: O94925	Recommended Dilutions: WB 1:5000-1:50000 IHC 1:200-1:800 IF 1:500-1:2000
Isotype: IgG	Full Name: glutaminase	
Immunogen Catalog Number: AG3505	Calculated MW: 669 aa, 73 kDa	
	Observed MW: 58 kDa, 65 kDa	

Applications

Tested Applications:
WB, IF/ICC, IHC, ELISA

Species Specificity:
Human, mouse, rat

Note-IHC: suggested antigen retrieval with TE buffer pH 9.0; (*) Alternatively, antigen retrieval may be performed with citrate buffer pH 6.0

Positive Controls:

WB: A549 cells, HeLa cells, COLO 320 cells, HEK-293 cells, SH-5Y5Y cells, NIH/3T3 cells, HSC-T6 cells, mouse brain tissue, rat brain tissue

IHC: mouse brain tissue,

IF: A549 cells,

Background Information

GLS, also named as GLS1 and KIAA0838, belongs to the glutaminase family. It catalyzes the first reaction in the primary pathway for the renal catabolism of glutamine. Glutaminase-, glutamate-, and taurine-immunoreactive neurons develop neurofibrillary tangles in Alzheimer's disease (PMID:1672808). The glutaminase band in AA/C1 cells is more intense than in HT29 cells, in accordance with measurements of glutaminase activity, and had the same molecular mass of approx. 63 kDa. The bands for both cell lines are clearly different in size from both rat liver glutaminase (58 kDa) and rat kidney glutaminase (65 kDa) (PMID:12408749). It also reveals a molecular weight of 83-84 kDa as a phosphate-dependent glutaminase (PMID:447624;7512428). It has 3 isoforms named as KGA, GAM, GAC. This antibody can recognize KGA and GAC.

Storage

Storage:
Store at -20°C. Stable for one year after shipment.
Storage Buffer:
PBS with 0.02% sodium azide and 50% glycerol pH 7.3.
Aliquoting is unnecessary for -20°C storage

For technical support and original validation data for this product please contact:

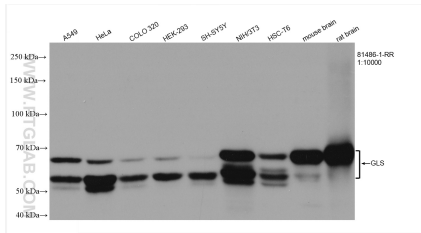
T: 4006900926

E: Proteintech-CN@ptglab.com

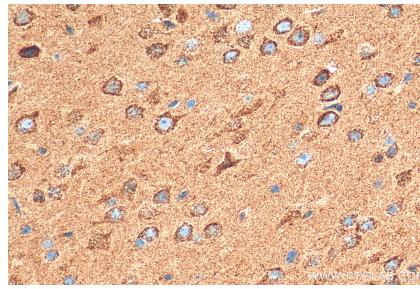
W: ptgcn.com

This product is exclusively available under Proteintech Group brand and is not available to purchase from any other manufacturer.

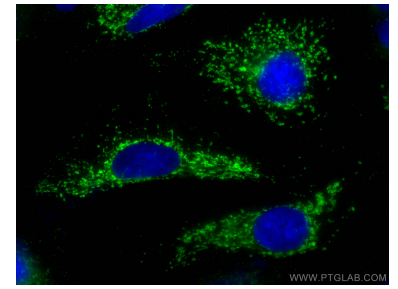
Selected Validation Data



Various lysates were subjected to SDS PAGE followed by western blot with 81486-1-RR (GLS antibody) at dilution of 1:10000 incubated at room temperature for 1.5 hours.



Immunohistochemical analysis of paraffin-embedded mouse brain tissue slide using 81486-1-RR (GLS antibody) at dilution of 1:400 (under 40x lens). Heat mediated antigen retrieval with Tris-EDTA buffer (pH 9.0).



Immunofluorescent analysis of (-20°C Methanol) fixed A549 cells using GLS antibody (81486-1-RR, Clone: 4C20) at dilution of 1:1000 and CoraLite®488-Conjugated AffiniPure Goat Anti-Rabbit IgG(H+L) (SA00013-2).