

For Research Use Only

# Caspase 1 Recombinant antibody

Catalog Number: 81482-1-RR

Featured Product

27 Publications



## Basic Information

Catalog Number:

81482-1-RR

Concentration:

1000 ug/ml

Source:

Rabbit

Isotype:

IgG

Immunogen Catalog Number:

AG11143

GenBank Accession Number:

BC062327

GeneID (NCBI):

834

UNIPROT ID:

P29466

Full Name:

caspase 1, apoptosis-related cysteine peptidase (interleukin 1, beta, convertase)

Calculated MW:

404 aa, 45 kDa

Observed MW:

30 kDa, 35 kDa, 43-45 kDa

Purification Method:

Protein A purification

CloneNo.:

1018

Recommended Dilutions:

WB 1:5000-1:50000

## Applications

Tested Applications:

WB, ELISA

Cited Applications:

WB, IHC, IF

Species Specificity:

human

Cited Species:

human, mouse, rat

Positive Controls:

WB : Raji cells, THP-1 cells, U-937 cells

## Background Information

CASP1(caspase-1) is also named as IL1BC, IL1BCE and belongs to the peptidase C14A family. It is a cysteine protease that regulates inflammatory processes through its capacity to process and activate the interleukin-1-beta (IL1B), IL18, and IL33 precursor proteins. The active caspase-1 can increase cellular membrane permeability and intracellular calcium levels, which facilitates lysosome exocytosis and release of host antimicrobial factors and microbial products (PMID:21804020). It has 5 isoforms produced by alternative splicing. 81482-1-RR can recognize the splicing isoforms of caspase 1.

## Notable Publications

Author	Pubmed ID	Journal	Application
Jingfei Zhang	36290717	Antioxidants (Basel)	WB
Yin Zhang	39773316	J Toxicol Environ Health A	WB
Gaodan Liu	39722155	J Agric Food Chem	WB

## Storage

Storage:

Store at -20°C. Stable for one year after shipment.

Storage Buffer:

PBS with 0.02% sodium azide and 50% glycerol pH 7.3.

Aliquoting is unnecessary for -20°C storage

For technical support and original validation data for this product please contact:

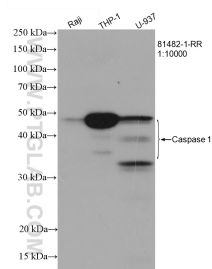
T: 4006900926

E: Proteintech-CN@ptglab.com

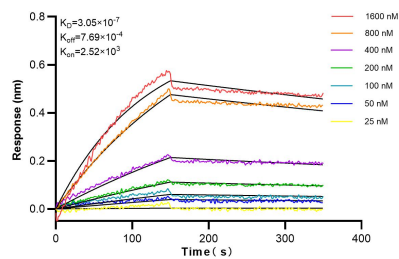
W: ptgcn.com

This product is exclusively available under Proteintech Group brand and is not available to purchase from any other manufacturer.

## Selected Validation Data



Various lysates were subjected to SDS PAGE followed by western blot with 81482-1-RR (Caspase 1 antibody) at dilution of 1:10000 incubated at room temperature for 1.5 hours.



Biolayer interferometry (BLI) kinetic assays of 81482-1-RR against Human Caspase 1 were performed. The affinity constant is 305 nM.