

# PSAT1 Recombinant antibody

Catalog Number: 81479-1-RR

## Basic Information

**Catalog Number:**

81479-1-RR

**Size:**

400 µg/ml

**Source:**

Rabbit

**Isotype:**

IgG

**Immunogen Catalog Number:**

AG0776

**GenBank Accession Number:**

BC004863

**GeneID (NCBI):**

29968

**UNIPROT ID:**

Q9Y617

**Full Name:**

phosphoserine aminotransferase 1

**Calculated MW:**

40 kDa

**Observed MW:**

37-40 kDa

**Purification Method:**

Protein A purification

**CloneNo.:**

1022

**Recommended Dilutions:**

WB 1:5000-1:50000

IF/ICC 1:200-1:800

## Applications

**Tested Applications:**

WB, IF/ICC, ELISA

**Species Specificity:**

Human, Mouse, Pig

**Positive Controls:**

WB : HepG2 cells, K-562 cells, NIH/3T3 cells, pig brain tissue

IF/ICC : HepG2 cells,

## Background Information

PSAT1, also named as PSA and PSAT, belongs to the class-V pyridoxal-phosphate-dependent aminotransferase family and SerC subfamily. It catalyzes the reversible conversion of 3-phosphohydroxypyruvate to phosphoserine and of 3-hydroxy-2-oxo-4-phosphonooxybutanoate to phosphohydroxythreonine. PSAT1 represents a new interesting target for CRC therapy. It may be implicated in altered serine metabolism and schizophrenia spectrum conditions. (PMID: 18221502, 20955740)

## Storage

**Storage:**

Store at -20°C. Stable for one year after shipment.

**Storage Buffer:**

PBS with 0.02% sodium azide and 50% glycerol pH 7.3.

Aliquoting is unnecessary for -20°C storage

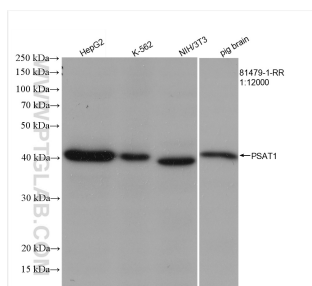
For technical support and original validation data for this product please contact:

T: 4006900926

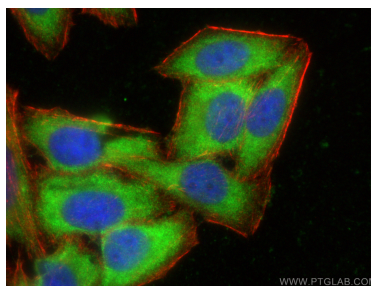
E: [Proteintech-CN@ptglab.com](mailto:Proteintech-CN@ptglab.com)W: [ptgcn.com](http://ptgcn.com)

This product is exclusively available under Proteintech Group brand and is not available to purchase from any other manufacturer.

## Selected Validation Data



Various lysates were subjected to SDS PAGE followed by western blot with 81479-1-RR (PSAT1 antibody) at dilution of 1:12000 incubated at room temperature for 1.5 hours.



Immunofluorescent analysis of (-20°C Ethanol) fixed HepG2 cells using PSAT1 antibody (81479-1-RR, Clone: 1O22 ) at dilution of 1:400 and CoraLite®488-Conjugated AffiniPure Goat Anti-Rabbit IgG(H+L), CL594-phalloidin (red).