

For Research Use Only

# PSAT1 Recombinant monoclonal antibody, PBS Only

Catalog Number: 81479-1-PBS

Featured Product



## Basic Information

Catalog Number:

81479-1-PBS

Source:

Rabbit

Isotype:

IgG

Immunogen Catalog Number:

AG0776

GenBank Accession Number:

BC004863

GeneID (NCBI):

29968

UNIPROT ID:

Q9Y617

Full Name:

phosphoserine aminotransferase 1

Calculated MW:

40 kDa

Observed MW:

37-40 kDa

Purification Method:

Protein A purification

CloneNo.:

1022

## Applications

Tested Applications:

WB, IHC, IF/ICC, Indirect ELISA

Species Specificity:

human, mouse, pig

## Background Information

PSAT1, also named as PSA and PSAT, belongs to the class-V pyridoxal-phosphate-dependent aminotransferase family and SerC subfamily. It catalyzes the reversible conversion of 3-phosphohydroxypyruvate to phosphoserine and of 3-hydroxy-2-oxo-4-phosphonooxybutanoate to phosphohydroxythreonine. PSAT1 represents a new interesting target for CRC therapy. It may be implicated in altered serine metabolism and schizophrenia spectrum conditions. (PMID: 18221502, 20955740)

## Storage

Storage:

Store at -80°C.

The product is shipped with ice packs. Upon receipt, store it immediately at -80°C

Storage Buffer:

PBS only, pH7.3

For technical support and original validation data for this product please contact:

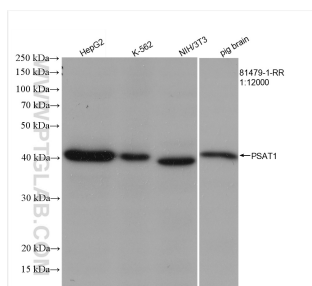
T: 4006900926

E: [Proteintech-CN@ptglab.com](mailto:Proteintech-CN@ptglab.com)

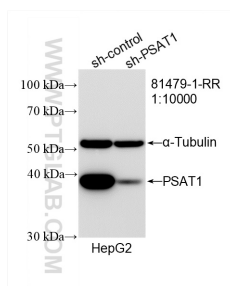
W: [ptgcn.com](http://ptgcn.com)

This product is exclusively available under Proteintech Group brand and is not available to purchase from any other manufacturer.

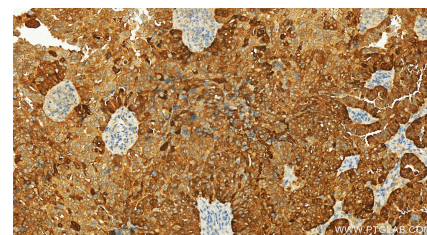
## Selected Validation Data



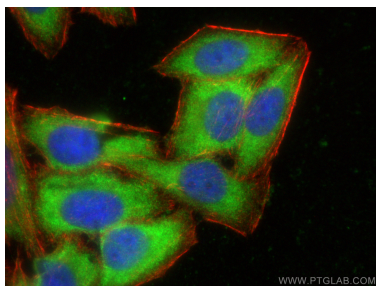
Various lysates were subjected to SDS PAGE followed by western blot with 81479-1-RR (PSAT1 antibody) at dilution of 1:12000 incubated at room temperature for 1.5 hours. This data was developed using the same antibody clone with 81479-1-PBS in a different storage buffer formulation.



WB result of PSAT1 antibody (81479-1-RR; 1:10000; incubated at room temperature for 1.5 hours) with sh-Control and sh-PSAT1 transfected HepG2 cells. This data was developed using the same antibody clone with 81479-1-PBS in a different storage buffer formulation.



Immunohistochemical analysis of paraffin-embedded human ovarian cancer slide using 81479-1-RR (PSAT1 antibody) at dilution of 1:600 (under 20x lens). Heat mediated antigen retrieval with Tris-EDTA buffer (pH 9.0). This data was developed using the same antibody clone with 81479-1-PBS in a different storage buffer formulation.



Immunofluorescent analysis of (-20°C Ethanol) fixed HepG2 cells using PSAT1 antibody (81479-1-RR, Clone: 1022) at dilution of 1:400 and CoraLite®488-Conjugated AffiniPure Goat Anti-Rabbit IgG(H+L), CL594-phalloidin (red). This data was developed using the same antibody clone with 81479-1-PBS in a different storage buffer formulation.