

For Research Use Only

# Phospho-RPS6KA1 (Thr359/Ser363) Recombinant antibody, PBS Only

Catalog Number: 81475-1-PBS



## Basic Information

Catalog Number:

81475-1-PBS

Size:

1mg/ml

Source:

Rabbit

Isotype:

IgG

GenBank Accession Number:

BC014966

GeneID (NCBI):

6195

UNIPROT ID:

Q15418

Full Name:

ribosomal protein S6 kinase, 90kDa,  
polypeptide 1

Calculated MW:

735 aa, 83 kDa

Observed MW:

83-90 kDa

Purification Method:

Protein A purification

CloneNo.:

3010

## Applications

Tested Applications:

WB, FC (Intra), Indirect ELISA

Species Specificity:

human, mouse

## Background Information

The 90 kDa ribosomal S6 kinases (RSK1-4) are a family of widely expressed serine/threonine kinases and play an important role in the MAPK signaling cascade and act downstream of ERK1/2 signaling. It can mediate mitogenic and stress-induced activation of the transcription factors CREB1, ETV1/ER81 and NR4A1/NUR77. RSK1 (RPS6KA1) is also designated as p90RSK associated with cellular proliferation, survival and differentiation. RPS6KA1 has some phosphorylation sites including Ser380, Thr359 and Ser363 which are important for kinase activation. (PMID: 16458888, 30813401, 17259979, 10679322)

## Storage

Storage:

Store at -80°C.

**The product is shipped with ice packs. Upon receipt, store it immediately at -80°C**

Storage Buffer:

PBS Only

For technical support and original validation data for this product please contact:

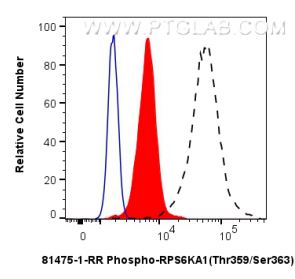
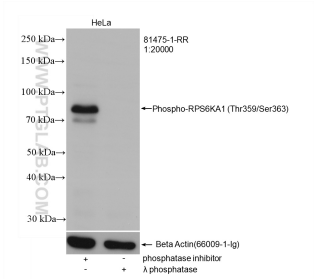
T: 4006900926

E: [Proteintech-CN@ptglab.com](mailto:Proteintech-CN@ptglab.com)

W: [ptgcn.com](http://ptgcn.com)

**This product is exclusively available under Proteintech Group brand and is not available to purchase from any other manufacturer.**

Selected Validation Data



Non-treated and  $\lambda$  phosphatase treated HeLa cells were subjected to SDS PAGE followed by western blot with 81475-1-RR (Phospho-RPS6KA1 (Thr359/Ser363) antibody) at dilution of 1:20000 incubated at room temperature for 1.5 hours. The membrane was stripped and re-blotted with Beta-Tubulin (66009-1-Ig) as loading control. This data was developed using the same antibody clone with 81475-1-PBS in a different storage buffer formulation.

$1 \times 10^6$  HeLa cells untreated (dashed lines) or treated with  $\lambda$  phosphatase which intracellularly stained with 0.06 ug Phospho-RPS6KA1 (Thr359/Ser363) Recombinant antibody (81475-1-RR, Clone:3O10) and Coralite® 488-Conjugated Goat Anti-Rabbit IgG(H+L) (SA00013-2)(red), or 0.06 ug Rabbit IgG Isotype Control Recombinant Antibody (98136-1-RR, Clone: 240953C9) (blue). Cells were fixed with 4% PFA and permeabilized with 90% MeOH. This data was developed