

For Research Use Only

Phospho-SMAD1 (Ser214) Recombinant antibody, PBS Only

Catalog Number: 81433-1-PBS



Basic Information

Catalog Number:

81433-1-PBS

Size:

1mg/ml

Source:

Rabbit

Isotype:

IgG

GenBank Accession Number:

BC001878

GeneID (NCBI):

4086

UNIPROT ID:

Q15797

Full Name:

SMAD family member 1

Calculated MW:

52 kDa

Observed MW:

52 kDa

Purification Method:

Protein A purification

CloneNo.:

3K8

Applications

Tested Applications:

WB, Indirect ELISA

Species Specificity:

human, mouse

Background Information

SMAD family member 1 (Smad1) have been involved in metastatic progression of many cancer types. Smad1 can be induced by many tumor-stimulating cytokines such as the bone morphogenetic protein 2 (BMP2) and TNF α and plays important roles in cell invasion and metastasis. BMP2 signalling is initiated by binding to its specific receptors, which leads to in the phosphorylation and nuclear translocation of Smad1. Translocated Smad1 then modulates the expression of downstream osteogenic genes. (PMID: 32954678, PMID: 30008908)

Storage

Storage:

Store at -80°C.

The product is shipped with ice packs. Upon receipt, store it immediately at -80°C

Storage Buffer:

PBS Only

For technical support and original validation data for this product please contact:

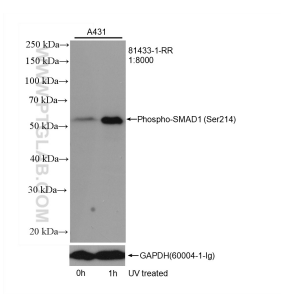
T: 4006900926

E: Proteintech-CN@ptglab.com

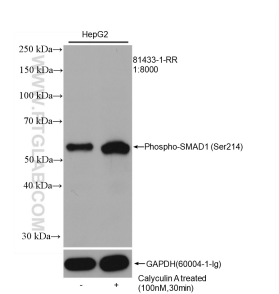
W: ptgcn.com

This product is exclusively available under Proteintech Group brand and is not available to purchase from any other manufacturer.

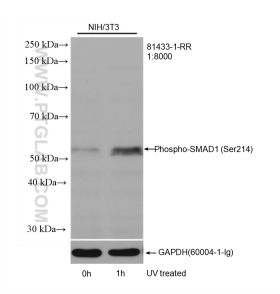
Selected Validation Data



Non-treated and UV treated A431 cells were subjected to SDS PAGE followed by western blot with 81433-1-RR (Phospho-SMAD1 (Ser214) antibody) at dilution of 1:8000 incubated at room temperature for 1.5 hours. The membrane was stripped and re-blotted with GAPDH antibody as loading control. This data was developed using the same antibody clone with 81433-1-PBS in a different storage buffer formulation.



Non-treated and Calyculin A treated HepG2 cells were subjected to SDS PAGE followed by western blot with 81433-1-RR (Phospho-SMAD1 (Ser214) antibody) at dilution of 1:8000 incubated at room temperature for 1.5 hours. The membrane was stripped and re-blotted with GAPDH antibody as loading control. This data was developed using the same antibody clone with 81433-1-PBS in a different storage buffer formulation.



Non-treated and UV treated NIH/3T3 cells were subjected to SDS PAGE followed by western blot with 81433-1-RR (Phospho-SMAD1 (Ser214) antibody) at dilution of 1:8000 incubated at room temperature for 1.5 hours. The membrane was stripped and re-blotted with GAPDH antibody as loading control. This data was developed using the same antibody clone with 81433-1-PBS in a different storage buffer formulation.