

EEF1A1 Recombinant antibody, PBS Only

Catalog Number: **81377-1-PBS**

Basic Information

Catalog Number: 81377-1-PBS	GenBank Accession Number: BC014224	Purification Method: Protein A purification
Size: 1mg/ml	GeneID (NCBI): 1915	CloneNo.: 2B16
Source: Rabbit	UNIPROT ID: P68104	
Isotype: IgG	Full Name: eukaryotic translation elongation factor 1 alpha 1	
Immunogen Catalog Number: AG1938	Calculated MW: 462 aa, 50 kDa	
	Observed MW: 50 kDa	

Applications

Tested Applications:
Indirect ELISA, IP, IF/ICC, IHC, WB

Species Specificity:
rat, mouse, human

Background Information

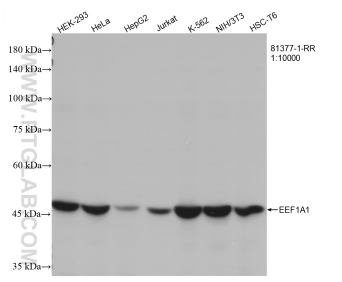
EEF1A1, also named as EEF1A, EF1A and LENG7, belongs to the GTP-binding elongation factor family. This protein promotes the GTP-dependent binding of aminoacyl-tRNA to the A-site of ribosomes during protein biosynthesis. It is a typical housekeeping gene product required for the maintenance of cell proliferation and/or survival. In addition, EEF1A1 protects the aminoester bond against hydrolysis until a correct match between the codon on mRNA and the anti-codon on tRNA can be achieved.

Storage

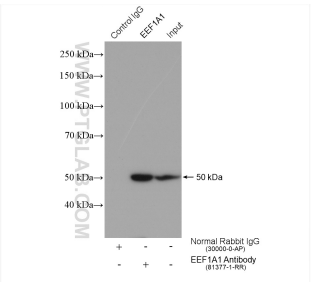
Storage:
Store at -80°C.
The product is shipped with ice packs. Upon receipt, store it immediately at -80°C

Storage Buffer:
PBS Only

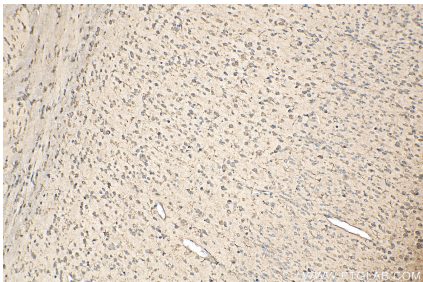
Selected Validation Data



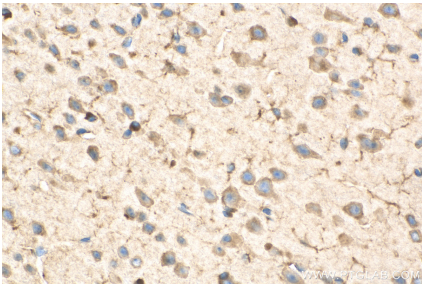
Various lysates were subjected to SDS PAGE followed by western blot with 81377-1-RR (EEF1A1 antibody) at dilution of 1:12000 incubated at room temperature for 1.5 hours. This data was developed using the same antibody clone with 81377-1-PBS in a different storage buffer formulation.



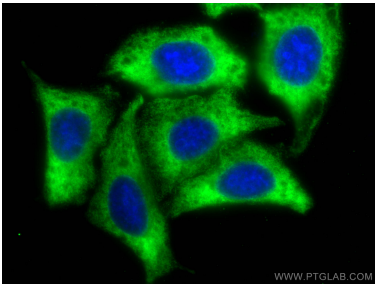
IP result of anti-EEF1A1 (IP:81377-1-RR, 4ug; Detection:81377-1-RR 1:8000) with HeLa cells lysate 1720 ug. This data was developed using the same antibody clone with 81377-1-PBS in a different storage buffer formulation.



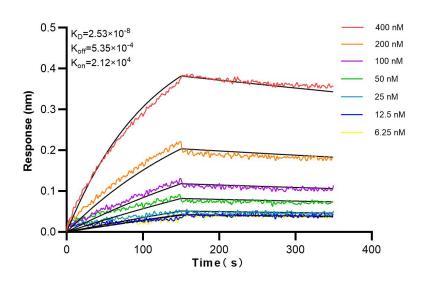
Immunohistochemical analysis of paraffin-embedded mouse brain tissue slide using 81377-1-RR (EEF1A1 antibody) at dilution of 1:500 (under 10x lens). Heat mediated antigen retrieval with Tris-EDTA buffer (pH 9.0). This data was developed using the same antibody clone with 81377-1-PBS in a different storage buffer formulation.



Immunohistochemical analysis of paraffin-embedded mouse brain tissue slide using 81377-1-RR (EEF1A1 antibody) at dilution of 1:500 (under 40x lens). Heat mediated antigen retrieval with Tris-EDTA buffer (pH 9.0). This data was developed using the same antibody clone with 81377-1-PBS in a different storage buffer formulation.



Immunofluorescent analysis of (-20°C Methanol) fixed HepG2 cells using EEF1A1 antibody (81377-1-RR, Clone: 2B16) at dilution of 1:400 and CoraLite® 488-Conjugated AffiniPure Goat Anti-Rabbit IgG(H+L). This data was developed using the same antibody clone with 81377-1-PBS in a different storage buffer formulation.



Bilayer interferometry (BLI) kinetic assays of 81377-1-RR against Human EEF1A1 were performed. The affinity constant is 25.3 nM.