

For Research Use Only

# P16-INK4A Recombinant antibody, PBS Only (Capture)

Catalog Number: 81373-6-PBS



## Basic Information

Catalog Number:

81373-6-PBS

Size:

1 mg/ml

Source:

Rabbit

Isotype:

IgG

Immunogen Catalog Number:

AG1328

GenBank Accession Number:

BC021998

GeneID (NCBI):

1029

UNIPROT ID:

Q8N726

Full Name:

cyclin-dependent kinase inhibitor 2A  
(melanoma, p16, inhibits CDK4)

Calculated MW:

16 kDa

Purification Method:

Protein A purification

CloneNo.:

241438G3

## Applications

Tested Applications:

Cytometric bead array, Sandwich ELISA, Indirect ELISA,  
Sample test

Species Specificity:

human

## Background Information

### Storage

Storage:

Store at -80°C.

**The product is shipped with ice packs. Upon receipt, store it immediately at -80°C**

Storage Buffer:

PBS Only

For technical support and original validation data for this product please contact:

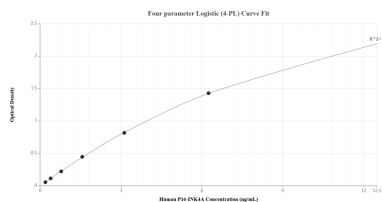
T: 4006900926

E: [Proteintech-CN@ptglab.com](mailto:Proteintech-CN@ptglab.com)

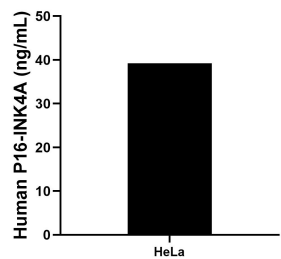
W: [ptgcn.com](http://ptgcn.com)

**This product is exclusively available under Proteintech Group brand and is not available to purchase from any other manufacturer.**

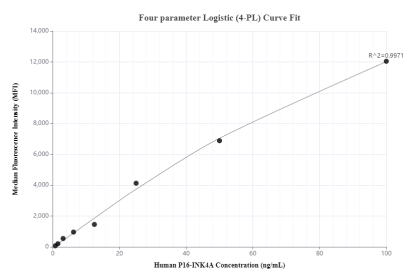
## Selected Validation Data



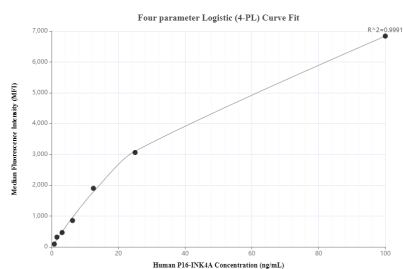
Sandwich ELISA standard curve of MP01135-4, Human P16-INK4A Recombinant Matched Antibody Pair - PBS only. 81373-6-PBS was coated to a plate as the capture antibody and incubated with serial dilutions of standard Ag1328. 81373-4-PBS was HRP conjugated as the detection antibody. Range: 0.195-12.5 ng/mL.



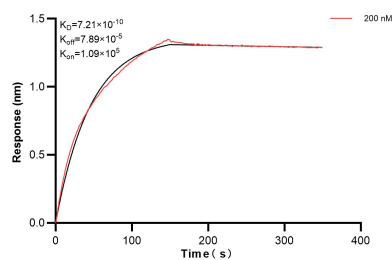
The mean P16-INK4A concentration was determined to be 39.21 ng/mL in HeLa cell extract based on a 2.80 mg/mL extract load.



Cytometric bead array standard curve of MP01135-2, P16-INK4A Recombinant Matched Antibody Pair, PBS Only. Capture antibody: 81373-6-PBS. Detection antibody: 81373-3-PBS. Standard: Ag1328. Range: 0.781-100 ng/mL.



Cytometric bead array standard curve of MP01135-3, P16-INK4A Recombinant Matched Antibody Pair, PBS Only. Capture antibody: 81373-6-PBS. Detection antibody: 81373-5-PBS. Standard: Ag1328. Range: 0.781-100 ng/mL.



Biolayer interferometry (BLI) kinetic assay of 81373-6-PBS against Human P16-INK4A was performed. The affinity constant is 0.721 nM.