

For Research Use Only

YTHDF2 Recombinant monoclonal antibody, PBS Only

Catalog Number: 81340-1-PBS

Featured Product



Basic Information

Catalog Number:

81340-1-PBS

Source:

Rabbit

Isotype:

IgG

Immunogen Catalog Number:

AG5922

GenBank Accession Number:

BC002559

GeneID (NCBI):

51441

UNIPROT ID:

Q9Y5A9

Full Name:

YTH domain family, member 2

Calculated MW:

62 kDa

Observed MW:

65-70 kDa

Purification Method:

Protein A purification

CloneNo.:

3L6

Applications

Tested Applications:

WB, IF/ICC, IP, Indirect ELISA

Species Specificity:

human, mouse, rat

Background Information

YTHDF2, also named as YTH domain-containing family protein 2, is a 579 amino acid protein, which contains 1 YTH domain. YTHDF2 specifically recognizes and binds N6-methyladenosine (m6A)-containing RNAs, and regulates mRNA stability. M6A is a modification present at internal sites of mRNAs and some non-coding RNAs and plays a role in the efficiency of mRNA splicing, processing and stability. YTHDF2 acts as a regulator of mRNA stability: binding to m6A-containing mRNAs results in the localization to mRNA decay sites, such as processing bodies (P-bodies), leading to mRNA degradation. YTHDF2 also acts as a promoter of cap-independent mRNA translation following heat shock stress: upon stress, relocalizes to the nucleus and specifically binds mRNAs with some m6A methylation mark at their 5'-UTR, protecting demethylation of mRNAs by FTO, thereby promoting cap-independent mRNA translation. The calculated molecular weight of YTHDF2 is 62 kDa, but the phosphorylated YTHDF2 is about 65-70 kDa.

Storage

Storage:

Store at -80°C.

The product is shipped with ice packs. Upon receipt, store it immediately at -80°C

Storage Buffer:

PBS only, pH7.3

For technical support and original validation data for this product please contact:

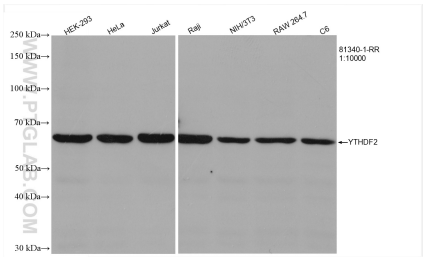
T: 4006900926

E: Proteintech-CN@ptglab.com

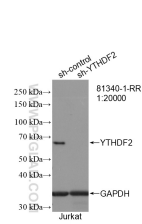
W: ptgcn.com

This product is exclusively available under Proteintech Group brand and is not available to purchase from any other manufacturer.

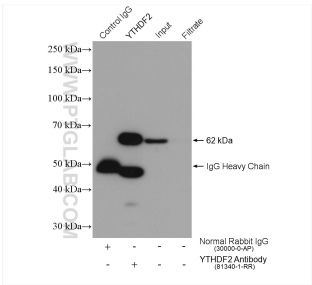
Selected Validation Data



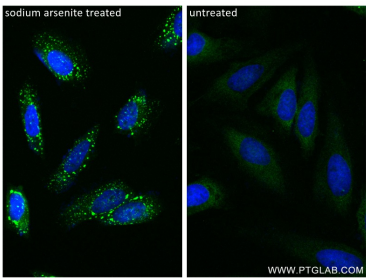
Various lysates were subjected to SDS PAGE followed by western blot with 81340-1-RR (YTHDF2 antibody) at dilution of 1:10000 incubated at room temperature for 1.5 hours. This data was developed using the same antibody clone with 81340-1-PBS in a different storage buffer formulation.



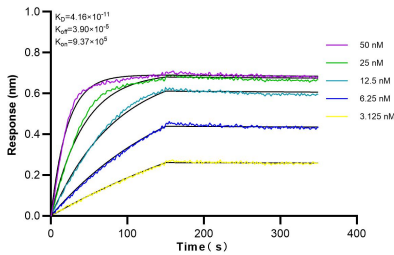
WB result of YTHDF2 antibody (81340-1-RR; 1:20000; incubated at room temperature for 1.5 hours) with sh-Control and sh-YTHDF2 transfected Jurkat cells. This data was developed using the same antibody clone with 81340-1-PBS in a different storage buffer formulation.



IP result of anti-YTHDF2 (IP:81340-1-RR, 4ug; Detection:81340-1-RR 1:1000) with HeLa cells lysate 1880 ug. This data was developed using the same antibody clone with 81340-1-PBS in a different storage buffer formulation.



Immunofluorescent analysis of (4% PFA) fixed sodium arsenite treated HeLa cells using YTHDF2 antibody (81340-1-RR, Clone: 3L6) at dilution of 1:400 and CoraLite®488-Conjugated Goat Anti-Rabbit IgG(H+L) (SA00013-2). This data was developed using the same antibody clone with 81340-1-PBS in a different storage buffer formulation.



Biolayer interferometry (BLI) kinetic assays of 81340-1-RR against Human YTHDF2 were performed. The affinity constant is 41.6 pM.