

For Research Use Only

EEA1 Recombinant antibody, PBS Only

Catalog Number: 81245-1-PBS

Featured Product



Basic Information

Catalog Number:

81245-1-PBS

Size:

1 mg/ml

Source:

Rabbit

Isotype:

IgG

Immunogen Catalog Number:

AG28814

GenBank Accession Number:

NM_003566

GeneID (NCBI):

8411

UNIPROT ID:

Q15075

Full Name:

early endosome antigen 1

Calculated MW:

162 kDa

Observed MW:

162 kDa

Purification Method:

Protein A purification

CloneNo.:

2C11

Applications

Tested Applications:

WB, Indirect ELISA

Species Specificity:

human, mouse, rat

Background Information

Early endosome antigen 1 (EEA1) is a marker of early endosomes and has an important role in endosomal trafficking. EEA1 contains coiled-coil regions and an FYVE-type zinc finger which interacts with phosphatidylinositol-3-phosphate. EEA1 functions as a Rab5 effector, mediates endosome docking and, together with SNAREs, leads to membrane fusion.

Storage

Storage:

Store at -80°C.

The product is shipped with ice packs. Upon receipt, store it immediately at -80°C

Storage Buffer:

PBS Only

For technical support and original validation data for this product please contact:

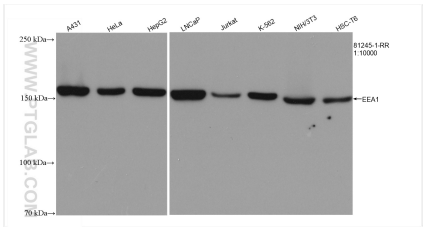
T: 4006900926

E: Proteintech-CN@ptglab.com

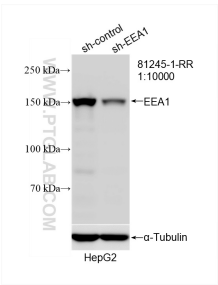
W: ptgcn.com

This product is exclusively available under Proteintech Group brand and is not available to purchase from any other manufacturer.

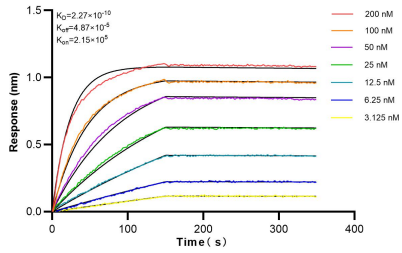
Selected Validation Data



Various lysates were subjected to SDS PAGE followed by western blot with 81245-1-RR (EEA1 antibody) at dilution of 1:10000 incubated at room temperature for 1.5 hours. This data was developed using the same antibody clone with 81245-1-PBS in a different storage buffer formulation.



WB result of EEA1 antibody (81245-1-RR; 1:10000; incubated at room temperature for 1.5 hours) with sh-Control and sh-EEA1 transfected HepG2 cells. This data was developed using the same antibody clone with 81245-1-PBS in a different storage buffer formulation.



Biolayer interferometry (BLI) kinetic assays of 81245-1-RR against Human EEA1 were performed. The affinity constant is 0.227 nM.