

For Research Use Only

# GRB10 Recombinant antibody

Catalog Number: 81225-1-RR



## Basic Information

<b>Catalog Number:</b> 81225-1-RR	<b>GenBank Accession Number:</b> BC024285	<b>Purification Method:</b> Protein A purification
<b>Size:</b> 1000 µg/ml	<b>GeneID (NCBI):</b> 2887	<b>CloneNo.:</b> 1D13
<b>Source:</b> Rabbit	<b>UNIPROT ID:</b> Q13322	<b>Recommended Dilutions:</b> WB 1:5000-1:50000 IF 1:500-1:2000
<b>Isotype:</b> IgG	<b>Full Name:</b> growth factor receptor-bound protein 10	
<b>Immunogen Catalog Number:</b> AG20355	<b>Calculated MW:</b> 536aa,61 kDa; 594aa,67 kDa	
	<b>Observed MW:</b> 60-70 kDa	

## Applications

<b>Tested Applications:</b> IF, WB, ELISA	<b>Positive Controls:</b>
<b>Species Specificity:</b> Human, Mouse, Rat	<b>WB :</b> PC-3 cells, NIH/3T3 cells, HSC-T6 cells <b>IF :</b> LNCaP cells,

## Background Information

GRB10 is an adapter protein which modulates coupling of a number of cell surface receptor kinases with specific signaling pathways. GRB10 has three consensus domains including pleckstrin homology (PH) domain, SH2/SH3 domain and Ras-associating domain. By binding to kinases, GRB10 suppresses signals from activated receptors tyrosine kinases, including INSR and IGF1R. It may play a role in mediating ubiquitination of INSR, leading to proteasomal degradation. GRB10 has 4 isoforms with the molecular mass of 60-70 kDa, which are produced by alternative splicing.

## Storage

**Storage:**  
Store at -20°C. Stable for one year after shipment.  
**Storage Buffer:**  
PBS with 0.02% sodium azide and 50% glycerol pH 7.3.  
Aliquoting is unnecessary for -20°C storage

For technical support and original validation data for this product please contact:

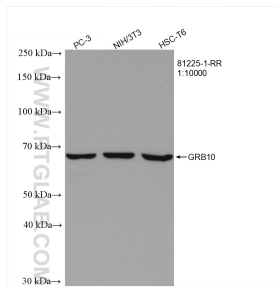
T: 4006900926

E: [Proteintech-CN@ptglab.com](mailto:Proteintech-CN@ptglab.com)

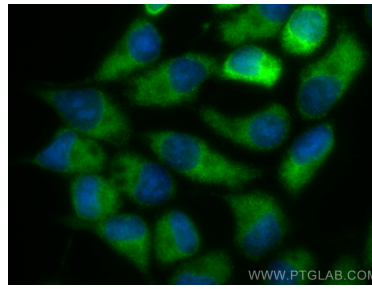
W: [ptgcn.com](http://ptgcn.com)

This product is exclusively available under Proteintech Group brand and is not available to purchase from any other manufacturer.

## Selected Validation Data



Various lysates were subjected to SDS PAGE followed by western blot with 81225-1-RR (GRB10 antibody) at dilution of 1:10000 incubated at room temperature for 1.5 hours.



Immunofluorescent analysis of (-20°C Methanol) fixed LNCaP cells using GRB10 antibody (81225-1-RR, Clone: 1D13 ) at dilution of 1:1000 and CoraLite®488-Conjugated AffiniPure Goat Anti-Rabbit IgG(H+L).