

For Research Use Only

# mCherry Recombinant antibody, PBS Only

Catalog Number: 81202-2-PBS



## Basic Information

Catalog Number:

81202-2-PBS

Concentration:

1 mg/ml

Source:

Rabbit

Isotype:

IgG

Immunogen Catalog Number:

AG25320

GenBank Accession Number:

GeneID (NCBI):

Full Name:

Calculated MW:

27 kDa

Purification Method:

Protein A purification

CloneNo.:

241830F8

## Applications

Tested Applications:

WB, IF/ICC, FC (Intra), Indirect ELISA

Species Specificity:

recombinant protein

## Background Information

Red fluorescent proteins (RFPs) is a collective term referring to a heterogeneous group of red chromophore-carrying proteins, originating from various species and forming different protein lineages. The original RFP (dsRed) is a 225 amino acid fluorescent protein (25.9 kDa) derived from *Discosoma* sp.. It emits red light with a peak wavelength of 593 nm upon excitation by green light (excitation peak at 558 nm). When fused with other proteins, RFP serves as a versatile reporter protein e.g. for quantifying expression levels or facilitating visualization of subcellular localization through fluorescence microscopy. This antibody is a rabbit polyclonal antibody raised against mCherry.

## Storage

Storage:

Store at -80°C.

**The product is shipped with ice packs. Upon receipt, store it immediately at -80°C**

Storage Buffer:

PBS only

For technical support and original validation data for this product please contact:

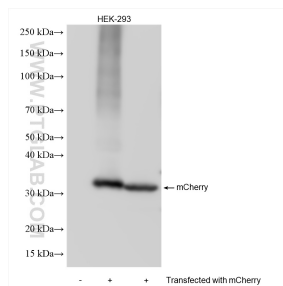
T: 4006900926

E: [Proteintech-CN@ptglab.com](mailto:Proteintech-CN@ptglab.com)

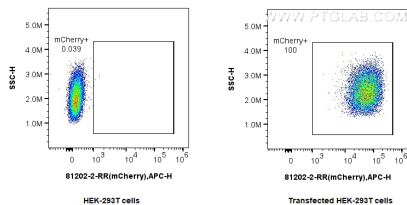
W: [ptgcn.com](http://ptgcn.com)

**This product is exclusively available under Proteintech Group brand and is not available to purchase from any other manufacturer.**

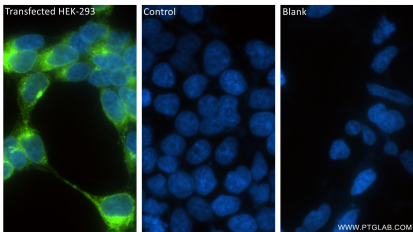
## Selected Validation Data



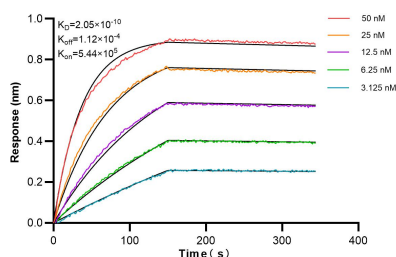
Various lysates were subjected to SDS PAGE followed by western blot with 81202-2-RR (mCherry antibody) at dilution of 1:20000 incubated at room temperature for 1.5 hours. This data was developed using the same antibody clone with 81202-2-PBS in a different storage buffer formulation.



1x10<sup>6</sup> HEK-293T cells or mCherry Transfected HEK-293T cells were intracellularly stained with 0.25 ug mCherry Recombinant antibody (81202-2-RR, Clone:241830F8) and APC-Conjugated Goat Anti-Rabbit IgG(H+L). Cells were fixed with 4% PFA and permeabilized with Flow Cytometry Perm Buffer (PF00011-C). This data was developed using the same antibody clone with 81202-2-PBS in a different storage buffer formulation.



Immunofluorescent analysis of (4% PFA) fixed Transfected HEK-293 cells using mCherry antibody (81202-2-RR, Clone: 241830F8 ) at dilution of 1:400 and Coralite®488-Conjugated Goat Anti-Rabbit IgG(H+L) (SA00013-2). This data was developed using the same antibody clone with 81202-2-PBS in a different storage buffer formulation.



Biolayer interferometry (BLI) kinetic assays of 81202-2-RR against mCherry were performed. The affinity constant is 0.205 nM.