

For Research Use Only

AFP Recombinant antibody

Catalog Number: 81083-1-RR

Featured Product



Basic Information

Catalog Number:

81083-1-RR

Concentration:

1000 ug/ml

Source:

Rabbit

Isotype:

IgG

Immunogen Catalog Number:

AG6089

GenBank Accession Number:

BC027881

GeneID (NCBI):

174

UNIPROT ID:

P02771

Full Name:

alpha-fetoprotein

Calculated MW:

69 kDa

Observed MW:

68-72 kDa

Purification Method:

Protein A purification

CloneNo.:

2D17

Recommended Dilutions:

WB 1:5000-1:50000

IHC 1:50-1:500

Applications

Tested Applications:

WB, IHC, ELISA

Species Specificity:

human

**Note-IHC: suggested antigen retrieval with
TE buffer pH 9.0; (*) Alternatively, antigen
retrieval may be performed with citrate
buffer pH 6.0**

Positive Controls:

WB : HepG2 cells, HuH-7 cells, human placenta tissue

IHC : human liver cancer tissue, human colon cancer
tissue

Background Information

AFP (Alpha-fetoprotein) is a major plasma protein in the fetus and its concentration is very low in the adult (PMID:24120489). AFP can be detected at abnormally high concentrations in hepatocellular carcinomas as well as in the plasma and ascitic fluid of adults with hepatoma, indicating that AFP can serve as a tumor marker (PMID: 18669658). AFP is also a glycosylated protein and based on its binding capability to lectin Lens Culinaris Agglutinin (LCA), and total AFP can be separated into three different glycoforms, AFP-L1, AFP-L2, and AFP-L3. Core-fucosylated form of AFP (AFP-L3) is a more specific indicator than total AFP for HCC (PMID: 33128033, 35458505)

Storage

Storage:

Store at -20°C. Stable for one year after shipment.

Storage Buffer:

PBS with 0.02% sodium azide and 50% glycerol

Aliquoting is unnecessary for -20°C storage

For technical support and original validation data for this product please contact:

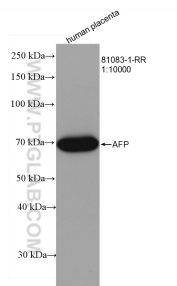
T: 4006900926

E: Proteintech-CN@ptglab.com

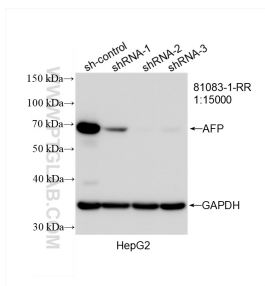
W: ptgcn.com

This product is exclusively available under Proteintech Group brand and is not available to purchase from any other manufacturer.

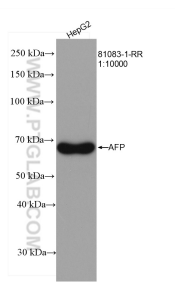
Selected Validation Data



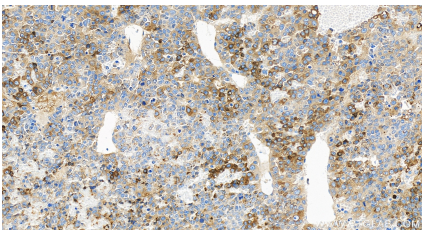
human placenta were subjected to SDS PAGE followed by western blot with 81083-1-RR (AFP antibody) at dilution of 1:10000 incubated at room temperature for 1.5 hours.



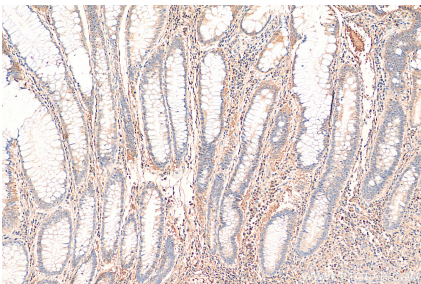
WB result of AFP antibody (81083-1-RR; 1:15000; incubated at room temperature for 1.5 hours) with sh-Control and sh-AFP transfected HepG2 cells.



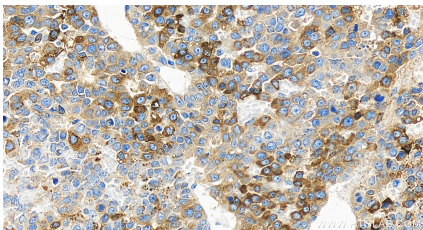
HepG2 cells were subjected to SDS PAGE followed by western blot with 81083-1-RR (AFP antibody) at dilution of 1:10000 incubated at room temperature for 1.5 hours.



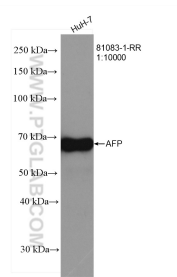
Immunohistochemical analysis of paraffin-embedded human liver cancer tissue slide using 81083-1-RR (AFP antibody) at dilution of 1:200 (under 20x lens). Heat mediated antigen retrieval with Tris-EDTA buffer (pH 9.0).



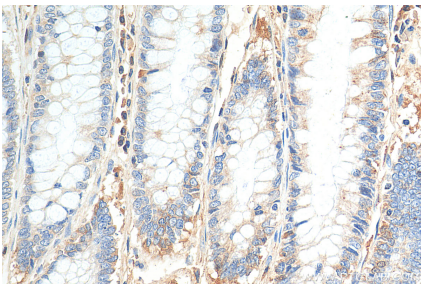
Immunohistochemical analysis of paraffin-embedded human colon cancer tissue slide using 81083-1-RR (AFP antibody) at dilution of 1:200 (under 10x lens). Heat mediated antigen retrieval with Tris-EDTA buffer (pH 9.0).



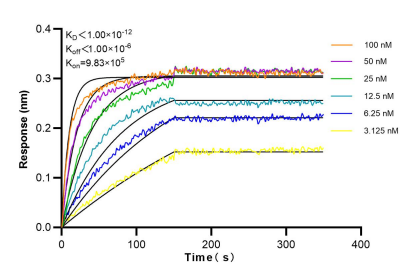
Immunohistochemical analysis of paraffin-embedded human liver cancer tissue slide using 81083-1-RR (AFP antibody) at dilution of 1:200 (under 20x lens). Heat mediated antigen retrieval with Tris-EDTA buffer (pH 9.0).



HuH-7 cells were subjected to SDS PAGE followed by western blot with 81083-1-RR (AFP antibody) at dilution of 1:10000 incubated at room temperature for 1.5 hours.



Immunohistochemical analysis of paraffin-embedded human colon cancer tissue slide using 81083-1-RR (AFP antibody) at dilution of 1:200 (under 40x lens). Heat mediated antigen retrieval with Tris-EDTA buffer (pH 9.0).



Biolayer interferometry (BLI) kinetic assays of 81083-1-RR against Human AFP were performed. The affinity constant is below 1 pM.