

For Research Use Only

CAMK2D Recombinant antibody, PBS Only

Catalog Number: 81014-1-PBS



Basic Information

Catalog Number:

81014-1-PBS

Size:

1mg/ml

Source:

Rabbit

Isotype:

IgG

Immunogen Catalog Number:

AG31276

GenBank Accession Number:

BC032784

GeneID (NCBI):

817

UNIPROT ID:

Q13557

Full Name:

calcium/calmodulin-dependent
protein kinase II delta

Calculated MW:

59 kDa

Observed MW:

54-59 kDa

Purification Method:

Protein A purification

CloneNo.:

1M10

Applications

Tested Applications:

WB, IHC, Indirect ELISA

Species Specificity:

human, mouse, rat, pig

Background Information

CaMKII delta, also named as CAMKD, belongs to the protein kinase superfamily, CAMK Ser/Thr protein kinase family and CaMK subfamily. CaM-kinase II (CAMK2) is a prominent kinase in the central nervous system that may function in long-term potentiation and neurotransmitter release, composed of four different chains: alpha, beta, gamma, and delta. The CAMK2 protein kinases contain a unique C-terminal subunit association domain responsible for oligomerization. The different chains assemble into homo-or heteromultimeric holoenzymes composed of 8 to 12 subunits. This antibody is specific to the C-term of delta chain, CaMKII delta. It may also recognize CAMK2A due to the high homology.

Storage

Storage:

Store at -80°C.

The product is shipped with ice packs. Upon receipt, store it immediately at -80°C

Storage Buffer:

PBS Only

For technical support and original validation data for this product please contact:

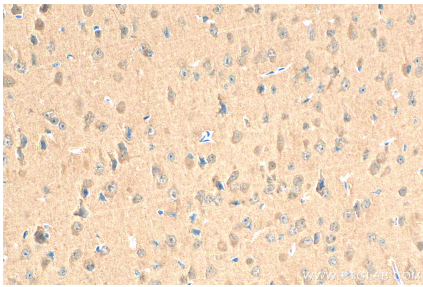
T: 4006900926

E: Proteintech-CN@ptglab.com

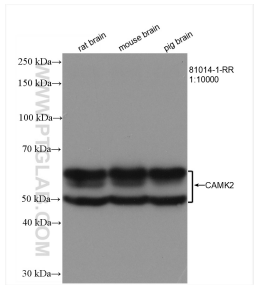
W: ptgcn.com

This product is exclusively available under Proteintech Group brand and is not available to purchase from any other manufacturer.

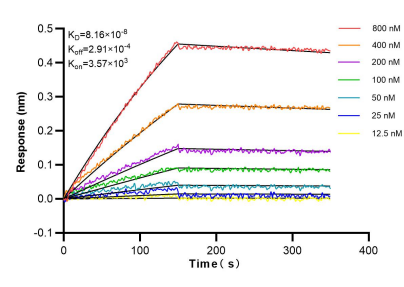
Selected Validation Data



Immunohistochemical analysis of paraffin-embedded mouse brain tissue slide using 81014-1-RR (CAMK2D antibody) at dilution of 1:200 (under 40x lens). Heat mediated antigen retrieval with Tris-EDTA buffer (pH 9.0). This data was developed using the same antibody clone with 81014-1-PBS in a different storage buffer formulation.



Various lysates were subjected to SDS PAGE followed by western blot with 81014-1-RR (CAMK2D antibody) at dilution of 1:10000 incubated at room temperature for 1.5 hours. This data was developed using the same antibody clone with 81014-1-PBS in a different storage buffer formulation.



Biolayer interferometry (BLI) kinetic assays of 81014-1-RR against Human CAMK2D were performed. The affinity constant is 81.6 nM.