

For Research Use Only

LC3 Recombinant antibody

Catalog Number: 81004-1-RR

Featured Product

20 Publications



Basic Information

Catalog Number:

81004-1-RR

Concentration:

1000 μ g/ml

Source:

Rabbit

Isotype:

IgG

Immunogen Catalog Number:

AG6144

GenBank Accession Number:

BC067797

GeneID (NCBI):

81631

ENSEMBL Gene ID:

ENSG00000140941

UNIPROT ID:

Q9GZQ8

Full Name:

microtubule-associated protein 1
light chain 3 beta

Calculated MW:

15 kDa

Observed MW:

14-18 kDa

Purification Method:

Protein A purification

CloneNo.:

5P12

Recommended Dilutions:

WB 1:2000-1:10000

IHC 1:250-1:1000

IF/ICC 1:500-1:2000

Applications

Tested Applications:

WB, IHC, IF/ICC, ELISA

Cited Applications:

WB, IHC, IF

Species Specificity:

human, mouse, rat, pig

Cited Species:

human, mouse, rat, bovine

**Note-IHC: suggested antigen retrieval with
TE buffer pH 9.0; (*) Alternatively, antigen
retrieval may be performed with citrate
buffer pH 6.0**

Positive Controls:

WB : mouse brain tissue, HEK-293 cells, HeLa cells,
Chloroquine treated HEK-293 cells, Chloroquine
treated HeLa cells

IHC : human colon cancer tissue, mouse brain tissue

IF/ICC : Chloroquine treated HeLa cells,

Background Information

Map1LC3, also known as LC3, is the human homolog of yeast Atg8 and is involved in the formation of autophagosomal vacuoles, called autophagosomes. Three human Map1LC3 isoforms, MAP1LC3A, MAP1LC3B, and MAP1LC3C, undergo post-translational modifications during autophagy. And they differ in their post-translation modifications during autophagy. Map1LC3 also exists in two modified forms, an 18 kDa cytoplasmic form that was originally identified as a subunit of the microtubule-associated protein 1, and a 14-16 kDa form that is associated with the autophagosome membrane.

Notable Publications

Author	Pubmed ID	Journal	Application
Hongzhu Zhang	39986118	Redox Biol	IF
Zibo Xu	39761761	Biochim Biophys Acta Mol Basis Dis	WB,IF
Kai Lin	39729999	Cell Metab	WB,IF

Storage

Storage:

Store at -20°C. Stable for one year after shipment.

Storage Buffer:

PBS with 0.02% sodium azide and 50% glycerol, pH7.3

Aliquoting is unnecessary for -20°C storage

For technical support and original validation data for this product please contact:

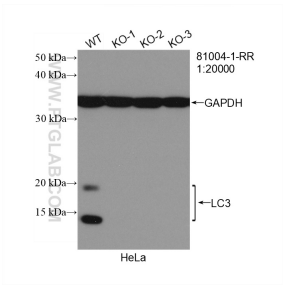
T: 4006900926

E: Proteintech-CN@ptglab.com

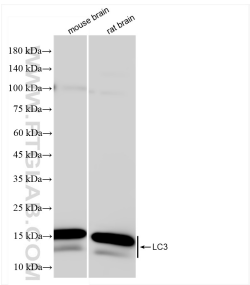
W: ptgcn.com

This product is exclusively available under Proteintech Group brand and is not available to purchase from any other manufacturer.

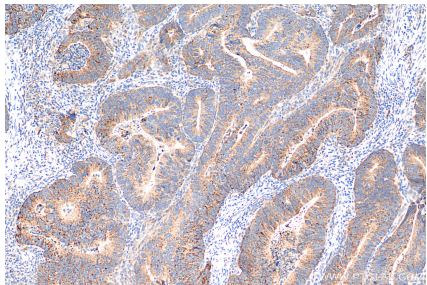
Selected Validation Data



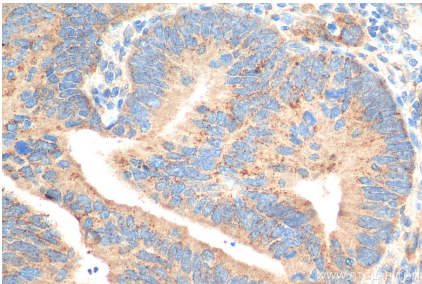
WB result of LC3 antibody (81004-1-RR; 1:20000; room temperature for 1.5 hours) with negative Control and LC3 knockout HeLa cells.



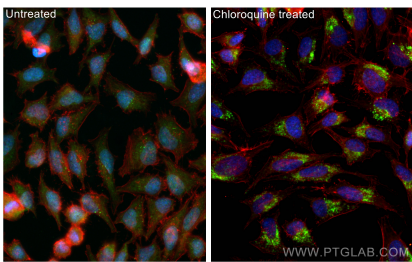
mouse brain tissue were subjected to SDS PAGE followed by western blot with 81004-1-RR (LC3 antibody) at dilution of 1:5000 incubated at room temperature for 1.5 hours.



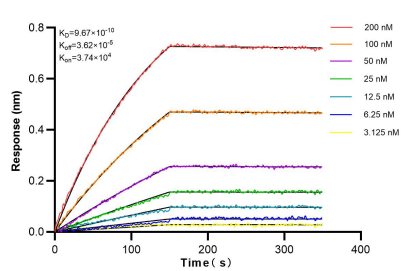
Immunohistochemical analysis of paraffin-embedded human colon cancer tissue slide using 81004-1-RR (LC3 antibody) at dilution of 1:500 (under 10x lens). Heat mediated antigen retrieval with Tris-EDTA buffer (pH 9.0).



Immunohistochemical analysis of paraffin-embedded human colon cancer tissue slide using 81004-1-RR (LC3 antibody) at dilution of 1:500 (under 40x lens). Heat mediated antigen retrieval with Tris-EDTA buffer (pH 9.0).



Immunofluorescent analysis of (-20°C Methanol) fixed Chloroquine treated HeLa cells using LC3 antibody (81004-1-RR, Clone: 5P12) at dilution of 1:1000 and CoraLite®488-Conjugated AffiniPure Goat Anti-Rabbit IgG(H+L), CoraLite®594 Beta Actin antibody (CL594-66009, Clone: 2D4H5, red).



Biolayer interferometry (BLI) kinetic assays of 81004-1-RR against Human LC3 were performed. The affinity constant is 0.967 nM.