

For Research Use Only

CP110 Recombinant antibody

Catalog Number: 80965-6-RR



Basic Information

Catalog Number:

80965-6-RR

Size:

1000 ug/ml

Source:

Rabbit

Isotype:

IgG

Immunogen Catalog Number:

AG3489

GenBank Accession Number:

BC036654

GeneID (NCBI):

9738

UNIPROT ID:

O43303

Full Name:

CP110 protein

Calculated MW:

991 aa, 111 kDa

Observed MW:

113 kDa

Purification Method:

Protein A purification

CloneNo.:

242016B2

Recommended Dilutions:

WB 1:500-1:2000

Applications

Tested Applications:

WB, ELISA

Species Specificity:

human

Positive Controls:

WB : HEK-293T cells, Jurkat cells, MOLT-4 cells, HCT 116 cells, HeLa cells, K-562 cells, U2OS cells

Background Information

CP110, also named as CCP110 and KIAA0419, is an 110kDa protein. This gene is different to the gene CEP110 (geneID:11064; CNTRL). CP110 is a centriolar protein that positively regulates centriole duplication while restricting centriole elongation and ciliogenesis. And it acts as a key negative regulator of ciliogenesis in collaboration with CEP97 by capping the mother centriole thereby preventing cilia formation.

Storage

Storage:

Store at -20°C. Stable for one year after shipment.

Storage Buffer:

PBS with 0.02% sodium azide and 50% glycerol pH 7.3.

Aliquoting is unnecessary for -20°C storage

For technical support and original validation data for this product please contact:

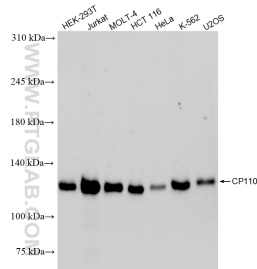
T: 4006900926

E: Proteintech-CN@ptglab.com

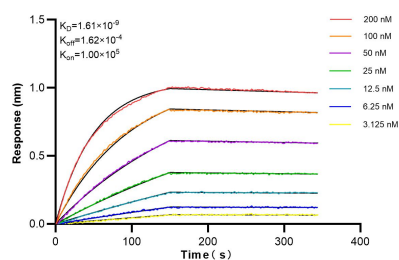
W: ptgcn.com

This product is exclusively available under Proteintech Group brand and is not available to purchase from any other manufacturer.

Selected Validation Data



Various lysates were subjected to SDS PAGE followed by western blot with 80965-6-RR (CP110 antibody) at dilution of 1:1000 incubated at room temperature for 1.5 hours.



Biolayer interferometry (BLI) kinetic assays of 80965-6-RR against Human CP110 were performed. The affinity constant is 1.61 nM.