

For Research Use Only

CP110 Recombinant antibody, PBS Only (Capture)

Catalog Number: 80965-4-PBS



Basic Information

Catalog Number:

80965-4-PBS

Size:

1 mg/ml

Source:

Rabbit

Isotype:

IgG

Immunogen Catalog Number:

AG3489

GenBank Accession Number:

BC036654

GeneID (NCBI):

9738

UNIPROT ID:

O43303

Full Name:

CP110 protein

Calculated MW:

991 aa, 111 kDa

Purification Method:

Protein A purification

CloneNo.:

242016H3

Applications

Tested Applications:

Cytometric bead array, Sandwich ELISA, Indirect ELISA,
Sample test

Species Specificity:

human

Background Information

Storage

Storage:

Store at -80°C.

The product is shipped with ice packs. Upon receipt, store it immediately at -80°C

Storage Buffer:

PBS Only

For technical support and original validation data for this product please contact:

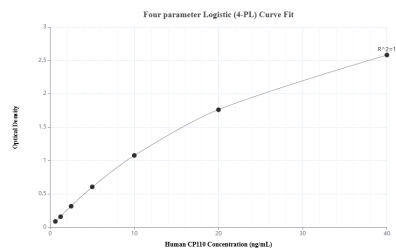
T: 4006900926

E: Proteintech-CN@ptglab.com

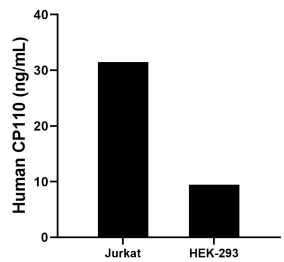
W: ptgcn.com

This product is exclusively available under Proteintech Group brand and is not available to purchase from any other manufacturer.

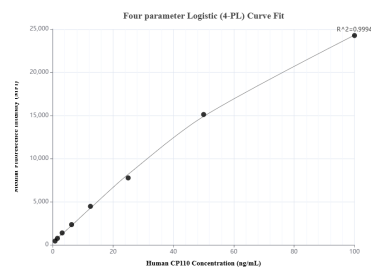
Selected Validation Data



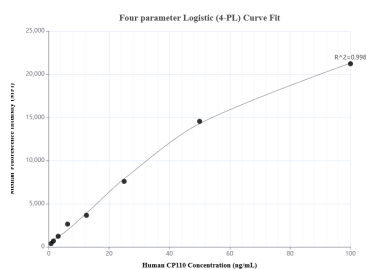
Sandwich ELISA standard curve of MP01447-3, Human CP110 Recombinant Matched Antibody Pair - PBS only. 80965-4-PBS was coated to a plate as the capture antibody and incubated with serial dilutions of standard Ag3489. 80965-5-PBS was HRP conjugated as the detection antibody. Range: 0.625-40 ng/mL



The mean CP110 concentration was determined to be 31.64 ng/mL in Jurkat cell extract based on a 4.2 mg/mL extract load and 9.42 ng/mL in HEK-293 cell extract based on a 1.2 mg/mL extract load.



Cytometric bead array standard curve of MP01447-1, CP110 Recombinant Matched Antibody Pair, PBS Only. Capture antibody: 80965-4-PBS. Detection antibody: 80965-2-PBS. Standard: Ag3489. Range: 0.781-100 ng/mL



Cytometric bead array standard curve of MP01447-2, CP110 Recombinant Matched Antibody Pair, PBS Only. Capture antibody: 80965-4-PBS. Detection antibody: 80965-3-PBS. Standard: Ag3489. Range: 0.781-100 ng/mL