

For Research Use Only

Ribosomal protein L4 Recombinant antibody



Catalog Number: 80959-1-RR

Basic Information

Catalog Number:

80959-1-RR

Size:

1000 µg/ml

Source:

Rabbit

Isotype:

IgG

Immunogen Catalog Number:

AG28728

GenBank Accession Number:

BC009888

GeneID (NCBI):

6124

UNIPROT ID:

P36578

Full Name:

ribosomal protein L4

Calculated MW:

48 kDa

Observed MW:

48 kDa

Purification Method:

Protein A purification

CloneNo.:

3K6

Recommended Dilutions:

WB 1:5000-1:50000

IP 0.5-4.0 µg for 1.0-3.0 mg of total protein lysate

IF 1:200-1:800

Applications

Tested Applications:

FC, IF/ICC, IP, WB, ELISA

Species Specificity:

Human

Positive Controls:

WB : HEK-293 cells, HeLa cells, HepG2 cells, U2OS cells, Jurkat cells, K-562 cells

IP : HeLa cells,

IF : HepG2 cells,

Background Information

60S ribosomal protein L4 is encoded by RPL4 (or RPL1) gene. RPL4 is a component of 60S subunit of ribosome, and belongs to the L4E family. By interacting with c-Myb, RPL4 plays a important role in c-myc expression in response to growth factor and nutritional signals. Recently RPL4 was reported to be able to increase efficiency of viral recoding sequence.

Storage

Storage:

Store at -20°C. Stable for one year after shipment.

Storage Buffer:

PBS with 0.02% sodium azide and 50% glycerol pH 7.3.

Aliquoting is unnecessary for -20°C storage

For technical support and original validation data for this product please contact:

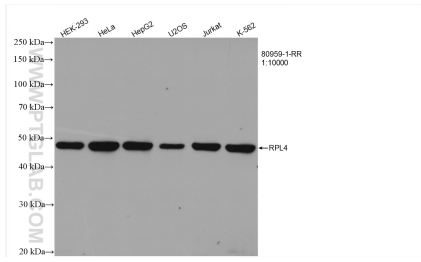
T: 4006900926

E: Proteintech-CN@ptglab.com

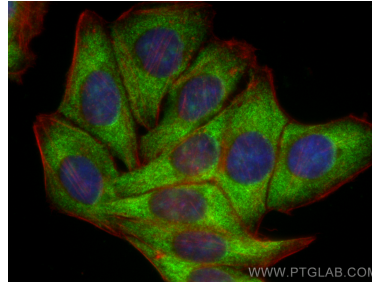
W: ptgcn.com

This product is exclusively available under Proteintech Group brand and is not available to purchase from any other manufacturer.

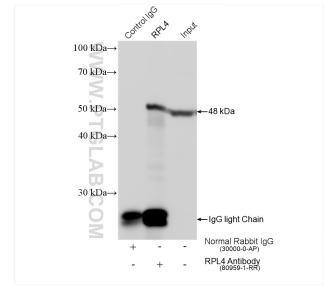
Selected Validation Data



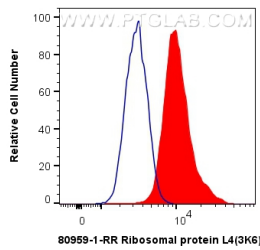
Various lysates were subjected to SDS PAGE followed by western blot with 80959-1-RR (RPL4 antibody) at dilution of 1:10000 incubated at room temperature for 1.5 hours.



Immunofluorescent analysis of (4% PFA) fixed HepG2 cells using Ribosomal protein L4 antibody (80959-1-RR, Clone: 3K6) at dilution of 1:400 and CoraLite®488-Conjugated AffiniPure Goat Anti-Rabbit IgG(H+L), CL594-Phalloidin (red).



IP result of anti-Ribosomal protein L4 (IP:80959-1-RR, 4ug; Detection:80959-1-RR 1:2000) with HeLa cells lysate 1560 ug.



1X10⁶ HepG2 cells were intracellularly stained with 0.4 ug Anti-Human Ribosomal protein L4 (80959-1-RR, Clone:3K6) and CoraLite®488-Conjugated AffiniPure Goat Anti-Rabbit IgG(H+L) at dilution 1:1000 (red), or 0.4 ug Isotype Control. Cells were fixed and permeabilized with Transcription Factor Staining Buffer Kit (PF00011).