

For Research Use Only

# Ribosomal protein L4 Recombinant antibody, PBS Only

Catalog Number: 80959-1-PBS



## Basic Information

Catalog Number:

80959-1-PBS

Size:

1mg/ml

Source:

Rabbit

Isotype:

IgG

Immunogen Catalog Number:

AG28728

GenBank Accession Number:

BC009888

GeneID (NCBI):

6124

UNIPROT ID:

P36578

Full Name:

ribosomal protein L4

Calculated MW:

48 kDa

Observed MW:

48 kDa

Purification Method:

Protein A purification

CloneNo.:

3K6

## Applications

Tested Applications:

WB, IHC, IF/ICC, FC (Intra), IP, Indirect ELISA

Species Specificity:

human

## Background Information

60S ribosomal protein L4 is encoded by RPL4 (or RPL1) gene. RPL4 is a component of 60S subunit of ribosome, and belongs to the L4E family. By interacting with c-Myb, RPL4 plays a important role in c-myc expression in response to growth factor and nutritional signals. Recently RPL4 was reported to be able to increase efficiency of viral recoding sequence.

## Storage

Storage:

Store at -80°C.

The product is shipped with ice packs. Upon receipt, store it immediately at -80°C

Storage Buffer:

PBS Only

For technical support and original validation data for this product please contact:

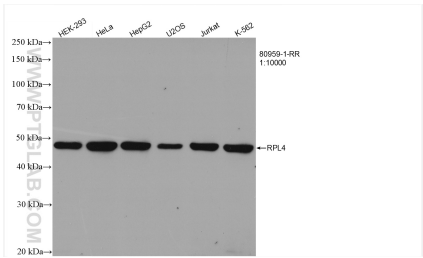
T: 4006900926

E: [Proteintech-CN@ptglab.com](mailto:Proteintech-CN@ptglab.com)

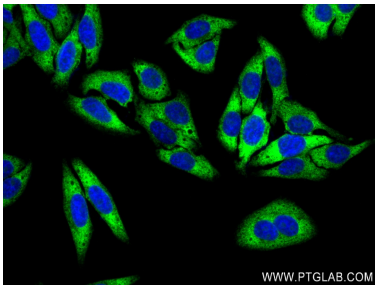
W: [ptgcn.com](http://ptgcn.com)

This product is exclusively available under Proteintech Group brand and is not available to purchase from any other manufacturer.

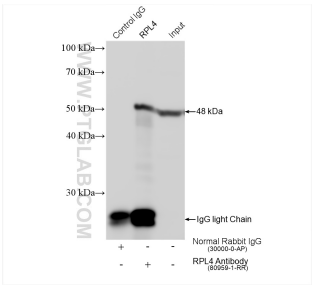
Selected Validation Data



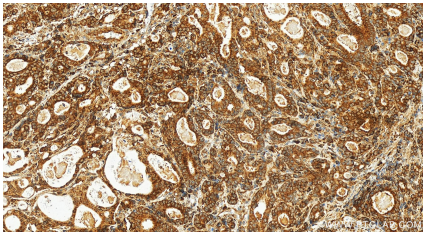
Various lysates were subjected to SDS PAGE followed by western blot with 80959-1-RR (RPL4 antibody) at dilution of 1:10000 incubated at room temperature for 1.5 hours. This data was developed using the same antibody clone with 80959-1-PBS in a different storage buffer formulation.



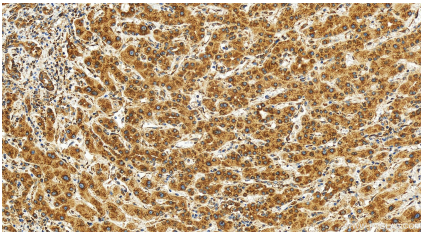
Immunofluorescent analysis of (4% PFA) fixed HepG2 cells using Ribosomal protein L4 antibody (80959-1-RR, Clone: 3K6 ) at dilution of 1:250 and CoraLite®488-Conjugated Goat Anti-Rabbit IgG(H+L) (SA00013-2). This data was developed using the same antibody clone with 80959-1-PBS in a different storage buffer formulation.



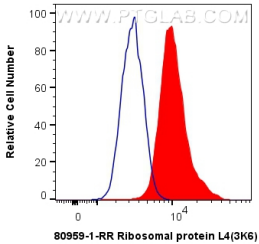
IP result of anti-Ribosomal protein L4 (IP:80959-1-RR, 4ug; Detection:80959-1-RR 1:2000) with HeLa cells lysate 1560 ug. This data was developed using the same antibody clone with 80959-1-PBS in a different storage buffer formulation.



Immunohistochemical analysis of paraffin-embedded human stomach cancer tissue slide using 80959-1-RR (Ribosomal protein L4 antibody) at dilution of 1:500 (under 20x lens). Heat mediated antigen retrieval with Tris-EDTA buffer(pH9). This data was developed using the same antibody clone with 80959-1-PBS in a different storage buffer formulation.



Immunohistochemical analysis of paraffin-embedded human intrahepatic cholangiocarcinoma tissue slide using 80959-1-RR (Ribosomal protein L4 antibody) at dilution of 1:200 (under 20x lens). Heat mediated antigen retrieval with Tris-EDTA buffer (pH 9.0). This data was developed using the same antibody clone with 80959-1-PBS in a different storage buffer formulation.



1X10<sup>6</sup> HepG2 cells were intracellularly stained with 0.4 ug Anti-Human Ribosomal protein L4 (80959-1-RR, Clone:3K6) and CoraLite®488-Conjugated AffiniPure Goat Anti-Rabbit IgG(H+L) at dilution 1:1000 (red), or 0.4 ug Isotype Control. Cells were fixed and permeabilized with Transcription Factor Staining Buffer Kit (PF00011). This data was developed using the same antibody clone with 80959-1-PBS in a different storage buffer formulation.