

For Research Use Only

YTHDF1 Recombinant antibody, PBS Only (Capture)

Catalog Number: 80876-4-PBS



Basic Information

Catalog Number: 80876-4-PBS	GenBank Accession Number: BC050284	Purification Method: Protein A purification
Size: 1 mg/ml	GeneID (NCBI): 54915	CloneNo.: 241445F12
Source: Rabbit	UNIPROT ID: Q9BYJ9	
Isotype: IgG	Full Name: YTH domain family, member 1	
Immunogen Catalog Number: AG11509	Calculated MW: 559 aa, 61 kDa	

Applications

Tested Applications:
Cytometric bead array, Sandwich ELISA, Indirect ELISA, Sample test

Species Specificity:
human

Background Information

Storage

Storage:
Store at -80°C.
The product is shipped with ice packs. Upon receipt, store it immediately at -80°C

Storage Buffer:
PBS Only

For technical support and original validation data for this product please contact:

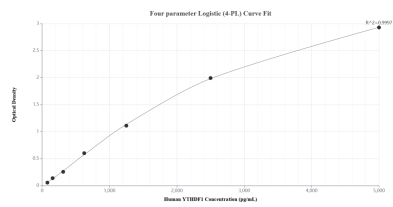
T: 4006900926

E: Proteintech-CN@ptglab.com

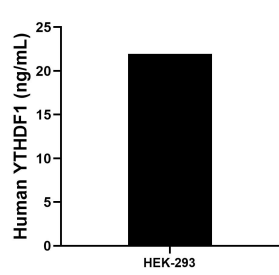
W: ptgcn.com

This product is exclusively available under Proteintech Group brand and is not available to purchase from any other manufacturer.

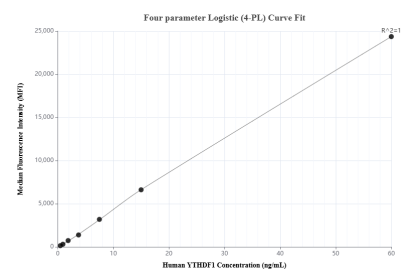
Selected Validation Data



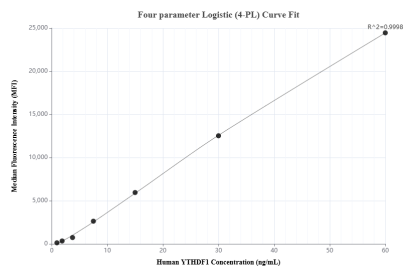
Sandwich ELISA standard curve of MP01146-4, Human YTHDF1 Recombinant Matched Antibody Pair - PBS only. 80876-4-PBS was coated to a plate as the capture antibody and incubated with serial dilutions of standard Ag11509. 80876-7-PBS was HRP conjugated as the detection antibody. Range: 78.1-5000 pg/mL.



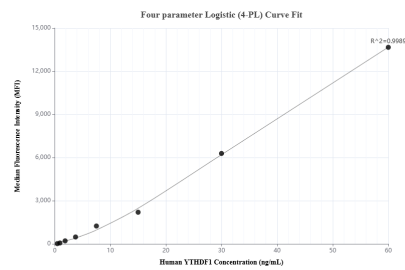
The mean YTHDF1 concentration was determined to be 22.0 ng/mL in HEK-293 cell extract based on a 1.5 mg/mL extract load.



Cytometric bead array standard curve of MP01146-1, YTHDF1 Recombinant Matched Antibody Pair, PBS Only. Capture antibody: 80876-4-PBS. Detection antibody: 80876-3-PBS. Standard: Ag11509. Range: 0.469-60 ng/mL



Cytometric bead array standard curve of MP01146-2, YTHDF1 Recombinant Matched Antibody Pair, PBS Only. Capture antibody: 80876-4-PBS. Detection antibody: 80876-5-PBS. Standard: Ag11509. Range: 0.938-60 ng/mL.



Cytometric bead array standard curve of MP01146-3, YTHDF1 Recombinant Matched Antibody Pair, PBS Only. Capture antibody: 80876-4-PBS. Detection antibody: 80876-2-PBS. Standard: Ag11509. Range: 0.469-60 ng/mL.