

For Research Use Only

# ALDOA Recombinant antibody, PBS Only



Catalog Number: 80837-1-PBS

## Basic Information

Catalog Number: 80837-1-PBS	GenBank Accession Number: BC016800	Purification Method: Protein A purification
Size: 1mg/ml	GeneID (NCBI): 226	CloneNo.: 2F4
Source: Rabbit	UNIPROT ID: P04075	
Isotype: IgG	Full Name: aldolase A, fructose-bisphosphate	
Immunogen Catalog Number: AG1726	Calculated MW: 39 kDa	
	Observed MW: 35-40 kDa	

## Applications

Tested Applications:  
WB, IF/ICC, Indirect ELISA

Species Specificity:  
Human, Mouse, Pig, rat

## Background Information

ALDOA (Fructose-bisphosphate aldolase A) is also named as lung cancer antigen NY-LU-1, muscle-type aldolase, ALDA and belongs to the class I fructose-bisphosphate aldolase family. The ALDOA gene encodes a homotetrameric protein (PMID:14615364). It is found in skeletal muscle and red blood cells, and functions in glycolysis, promoting the reversible cleavage of FBP to triose phosphate, G-3-P and DHAP. ALDOA is upregulated in various cancers, including human lung squamous and renal cell carcinomas (PMID:19937139).

## Storage

Storage:  
Store at -80°C.

The product is shipped with ice packs. Upon receipt, store it immediately at -80°C

Storage Buffer:  
PBS Only

For technical support and original validation data for this product please contact:

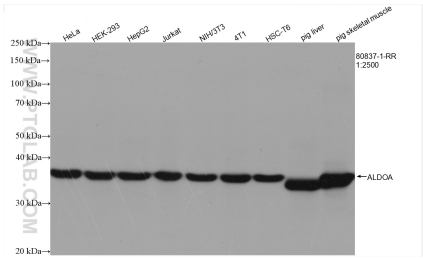
T: 4006900926

E: [Proteintech-CN@ptglab.com](mailto:Proteintech-CN@ptglab.com)

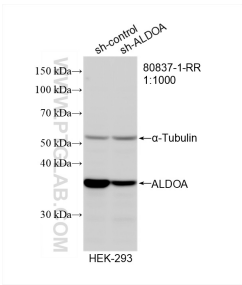
W: [ptgcn.com](http://ptgcn.com)

This product is exclusively available under Proteintech Group brand and is not available to purchase from any other manufacturer.

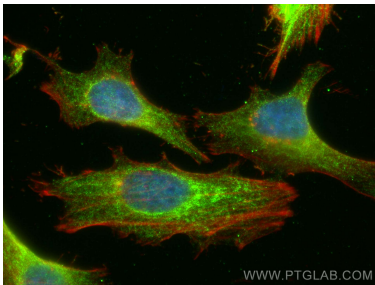
Selected Validation Data



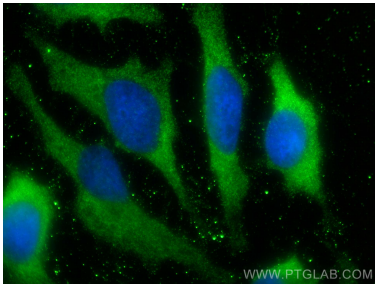
Various lysates were subjected to SDS PAGE followed by western blot with 80837-1-RR (ALDOA antibody) at dilution of 1:2500 incubated at room temperature for 1.5 hours. This data was developed using the same antibody clone with 80837-1-PBS in a different storage buffer formulation.



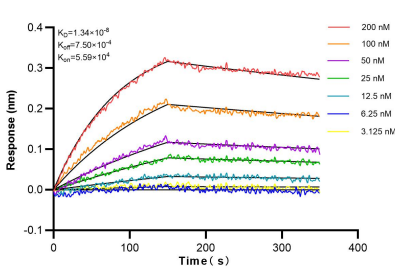
WB result of ALDOA antibody (80837-1-RR; 1:1000; incubated at room temperature for 1.5 hours) with sh-Control and sh-ALDOA transfected HEK-293 cells. This data was developed using the same antibody clone with 80837-1-PBS in a different storage buffer formulation.



Immunofluorescent analysis of (4% PFA) fixed HeLa cells using ALDOA antibody (80837-1-RR, Clone: 2F4) at dilution of 1:200 and CoraLite®488-Conjugated AffiniPure Goat Anti-Rabbit IgG(H+L), CL594-phalloidin (red). This data was developed using the same antibody clone with 80837-1-PBS in a different storage buffer formulation.



Immunofluorescent analysis of (-20°C Methanol) fixed HeLa cells using ALDOA antibody (80837-1-RR, Clone: 2F4) at dilution of 1:200 and CoraLite®488-Conjugated AffiniPure Goat Anti-Rabbit IgG(H+L). This data was developed using the same antibody clone with 80837-1-PBS in a different storage buffer formulation.



Biolayer interferometry (BLI) kinetic assays of 80837-1-RR against Human ALDOA were performed. The affinity constant is 1.34 nM.