

For Research Use Only

Alpha Tubulin Recombinant antibody, PBS Only (Detector)

Catalog Number: 80762-1-PBS

Featured Product



Basic Information

Catalog Number:

80762-1-PBS

Concentration:

1mg/ml

Source:

Rabbit

Isotype:

IgG

Immunogen Catalog Number:

AG18034

GenBank Accession Number:

BC009314

GeneID (NCBI):

10376

UNIPROT ID:

P68363

Full Name:

tubulin, alpha 1b

Calculated MW:

50 kDa

Observed MW:

50-55 kDa

Purification Method:

Protein A purification

CloneNo.:

1G7

Applications

Tested Applications:

WB, IHC, IF/ICC, IF-P, IF-Fro, Cytometric bead array,
Indirect ELISA

Species Specificity:

human, mouse, rat

Background Information

There are five tubulins in human cells: alpha, beta, gamma, delta, and epsilon. Tubulins are conserved across species. They form heterodimers, which multimerize to form a microtubule filament. An alpha and beta tubulin heterodimer is the basic structural unit of microtubules. The heterodimer does not come apart once formed. The alpha and beta tubulins, which are each about 55 kDa MW, are homologous but not identical. Alpha tubulin is useful for scientists across fields as an internal control due to its high, ubiquitous expression pattern.

Storage

Storage:

Store at -80°C.

The product is shipped with ice packs. Upon receipt, store it immediately at -80°C

Storage Buffer:

PBS only, pH7.3

For technical support and original validation data for this product please contact:

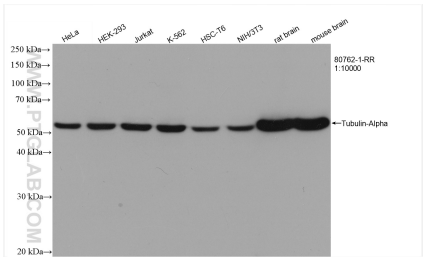
T: 4006900926

E: Proteintech-CN@ptglab.com

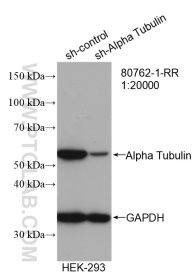
W: ptgcn.com

This product is exclusively available under Proteintech Group brand and is not available to purchase from any other manufacturer.

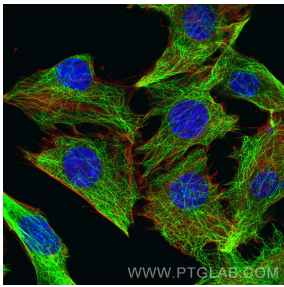
Selected Validation Data



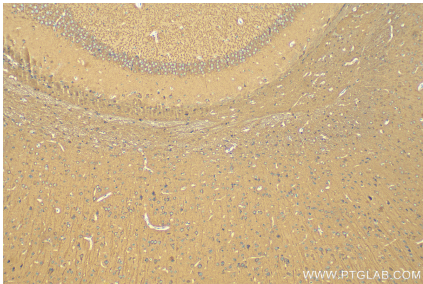
Various lysates were subjected to SDS PAGE followed by western blot with 80762-1-RR (Tubulin-Alpha antibody) at dilution of 1:10000 incubated at room temperature for 1.5 hours. This data was developed using the same antibody clone with 80762-1-PBS in a different storage buffer formulation.



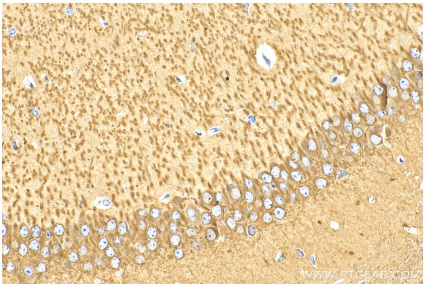
WB result of Alpha Tubulin antibody (80762-1-RR; 1:20000; incubated at room temperature for 1.5 hours) with sh-Control and sh-Alpha Tubulin transfected HEK-293 cells. This data was developed using the same antibody clone with 80762-1-PBS in a different storage buffer formulation.



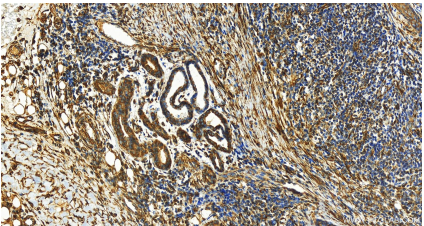
Immunofluorescent analysis of (4% PFA) fixed C2C12 cells using Alpha Tubulin antibody (80762-1-RR, Clone: 1G7) at dilution of 1:1000 and CoraLite®488-Conjugated AffiniPure Goat Anti-Rabbit IgG(H+L), CL594-Phalloidin (red). This data was developed using the same antibody clone with 80762-1-PBS in a different storage buffer formulation.



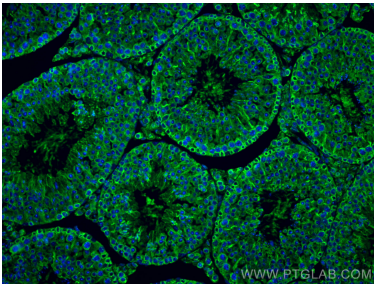
Immunohistochemical analysis of paraffin-embedded mouse brain tissue slide using 80762-1-RR (Alpha Tubulin antibody) at dilution of 1:1000 (under 10x lens). Heat mediated antigen retrieval with Tris-EDTA buffer (pH 9.0). This data was developed using the same antibody clone with 80762-1-PBS in a different storage buffer formulation.



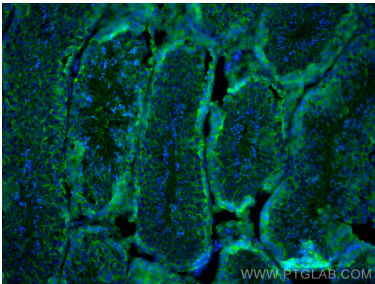
Immunohistochemical analysis of paraffin-embedded mouse brain tissue slide using 80762-1-RR (Alpha Tubulin antibody) at dilution of 1:1000 (under 40x lens). Heat mediated antigen retrieval with Tris-EDTA buffer (pH 9.0). This data was developed using the same antibody clone with 80762-1-PBS in a different storage buffer formulation.



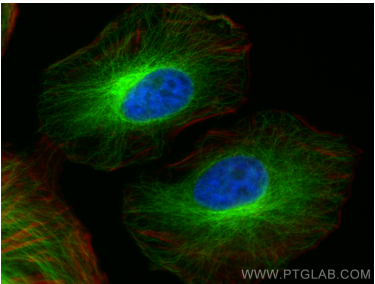
Immunohistochemical analysis of paraffin-embedded skin cancer slide using 80762-1-RR (Alpha Tubulin antibody) at dilution of 1:2000 (under 20x lens). Heat mediated antigen retrieval with Tris-EDTA buffer (pH 9.0). This data was developed using the same antibody clone with 80762-1-PBS in a different storage buffer formulation.



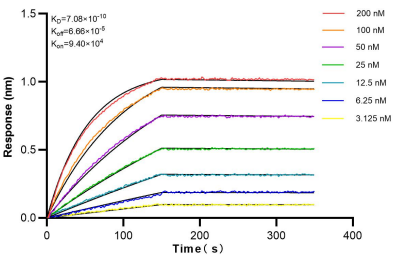
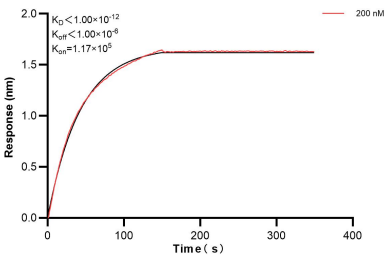
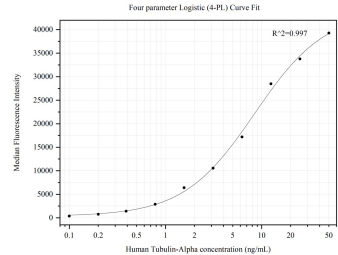
Immunofluorescent analysis of (4% PFA) fixed paraffin-embedded mouse testis tissue using Alpha Tubulin antibody (80762-1-RR, Clone: 1G7) at dilution of 1:400 and CoraLite®488-Conjugated AffiniPure Goat Anti-Rabbit IgG(H+L) (SA00013-2). Heat mediated antigen retrieval with Tris-EDTA buffer (pH 9.0). This data was developed using the same antibody clone with 80762-1-PBS in a different storage buffer formulation.



Immunofluorescent analysis of (4% PFA) fixed frozen OCT-embedded mouse testis tissue using Alpha Tubulin antibody (80762-1-RR, Clone: 1G7) at dilution of 1:400 and CoraLite®488-Conjugated AffiniPure Goat Anti-Rabbit IgG(H+L) (SA00013-2).Heat mediated antigen retrieval with Sodium Citrate buffer (pH 6.0). This data was developed using the same antibody clone with 80762-1-PBS in a different storage buffer formulation.



Immunofluorescent analysis of (4% PFA) fixed HeLa cells using Alpha Tubulin antibody (80762-1-RR, Clone: 1G7) at dilution of 1:400 and CoraLite®488-Conjugated Goat Anti-Rabbit IgG(H+L) (SA00013-2), CL594-Phalloidin (red). This data was developed using the same antibody clone with 80762-1-PBS in a different storage buffer formulation.



Cytometric bead array standard curve of MP00551-1, Tubulin-Alpha Recombinant Matched Antibody Pair, PBS Only. Capture antibody: 80740-1-PBS. Detection antibody: 80762-1-PBS. Standard:Ag18034. Range: 0.098-50 ng/mL

Biolayer interferometry (BLI) kinetic assay of 80762-1-PBS against Human Alpha Tubulin was performed. The affinity constant is below 1 pM.

Biolayer interferometry (BLI) kinetic assays of 80762-1-RR against Human Alpha Tubulin were performed. The affinity constant is 0.708 nM.