

For Research Use Only

PAX8 Recombinant antibody

Catalog Number: 80756-1-RR



Basic Information

Catalog Number:

80756-1-RR

Size:

1000 ug/ml

Source:

Rabbit

Isotype:

IgG

Immunogen Catalog Number:

AG0306

GenBank Accession Number:

BC001060

GeneID (NCBI):

7849

UNIPROT ID:

Q06710

Full Name:

paired box 8

Calculated MW:

48 kDa

Observed MW:

48 kDa, 58 kDa

Purification Method:

Protein A purification

CloneNo.:

6B14

Recommended Dilutions:

WB 1:5000-1:50000

IHC 1:5000-1:20000

IF/ICC 1:650-1:2600

Applications

Tested Applications:

WB, IHC, IF/ICC, ELISA

Species Specificity:

human, mouse

Note-IHC: suggested antigen retrieval with TE buffer pH 9.0; (*) Alternatively, antigen retrieval may be performed with citrate buffer pH 6.0

Positive Controls:

WB : SKOV-3 cells,

IHC : human ovary tumor tissue, human ovary cancer tissue, human renal cell carcinoma tissue, human thyroid cancer tissue, mouse kidney tissue

IF/ICC : SKOV-3 cells,

Background Information

PAX8 is a member of the paired box (PAX) family of transcription factors, typically containing a paired box domain and a paired-type homeodomain. It is expressed during organogenesis of the thyroid gland, kidney and Mullerian system. It is thought to regulate the expression of Wilms tumor suppressor (WT1) gene and mutations in PAX8 have been associated with Wilms tumor cells, thyroid and ovarian carcinomas. PAX8 is a useful marker in distinguishing ovarian carcinomas from mammary carcinomas (PMID: 18724243). PAX8 is expressed in a high percentage of ovarian serous, endometrioid, and clear cell carcinomas, but only rarely in primary ovarian mucinous adenocarcinoma.

Storage

Storage:

Store at -20°C. Stable for one year after shipment.

Storage Buffer:

PBS with 0.02% sodium azide and 50% glycerol pH 7.3.

Aliquoting is unnecessary for -20°C storage

For technical support and original validation data for this product please contact:

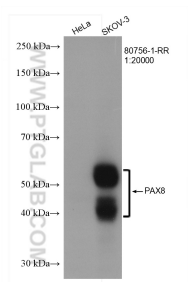
T: 4006900926

E: Proteintech-CN@ptglab.com

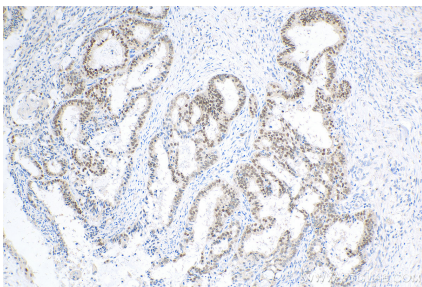
W: ptgcn.com

This product is exclusively available under Proteintech Group brand and is not available to purchase from any other manufacturer.

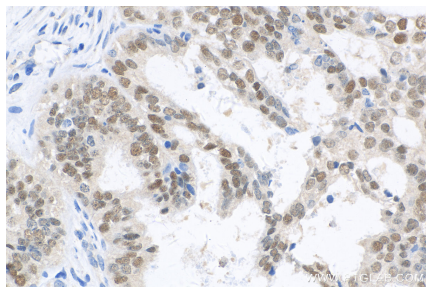
Selected Validation Data



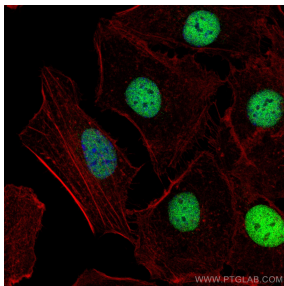
Various lysates were subjected to SDS PAGE followed by western blot with 80756-1-RR (PAX8 antibody) at dilution of 1:20000 incubated at room temperature for 1.5 hours.



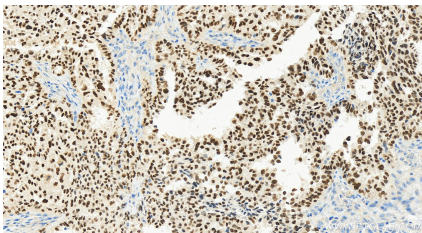
Immunohistochemical analysis of paraffin-embedded human ovary tumor tissue slide using 80756-1-RR (PAX8 antibody) at dilution of 1:8300 (under 10x lens). Heat mediated antigen retrieval with Tris-EDTA buffer (pH 9.0).



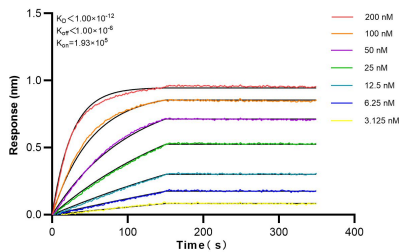
Immunohistochemical analysis of paraffin-embedded human ovary tumor tissue slide using 80756-1-RR (PAX8 antibody) at dilution of 1:8300 (under 40x lens). Heat mediated antigen retrieval with Tris-EDTA buffer (pH 9.0).



Immunofluorescent analysis of (4% PFA) fixed SKOV-3 cells using PAX8 antibody (80756-1-RR, Clone: 6B14) at dilution of 1:1300 and CoraLite®488-Conjugated AffiniPure Goat Anti-Rabbit IgG(H+L), CL594-Phalloidin (red).



Immunohistochemical analysis of paraffin-embedded human ovary cancer tissue slide using 80756-1-RR (PAX8 antibody) at dilution of 1:8000 (under 20x lens). Heat mediated antigen retrieval with Tris-EDTA buffer (pH 9.0).



Bi-layer interferometry (BLI) kinetic assays of 80756-1-RR against Human PAX8 were performed. The affinity constant is below 1 pM.