

For Research Use Only

Phospho-YAP1 (Ser397) Recombinant antibody

Catalog Number: 80694-3-RR



Basic Information

Catalog Number:

80694-3-RR

Concentration:

1000 µg/ml

Source:

Rabbit

Isotype:

IgG

GenBank Accession Number:

BC038235

GeneID (NCBI):

10413

UNIPROT ID:

P46937

Full Name:

Yes-associated protein 1, 65kDa

Calculated MW:

504 aa, 54 kDa

Observed MW:

75 kDa

Purification Method:

Protein A purification

CloneNo.:

250306F11

Recommended Dilutions:

WB: 1:1000-1:6000

Applications

Tested Applications:

WB, ELISA

Species Specificity:

human, mouse

Positive Controls:

WB : NIH/3T3 cells,

Background Information

The transcriptional factors Yes-associated protein 1 (YAP1) and PDZ-binding motif (TAZ) act as downstream effectors of the Hippo pathway, and their subcellular location and transcriptional activities are affected by multiple post-translational modifications (PTMs). After phosphorylation, YAP1/TAZ binds to the 14-3-3 protein, which induces cytoplasmic retention of YAP1/TAZ. Moreover, phosphorylated YAP1/TAZ is likely to undergo ubiquitination degradation that is dependent on the β -transducin repeat-containing E3 ubiquitin protein ligase complex. The phosphorylation of YAP at Ser127 promotes its cytoplasmic retention, whereas phosphorylation at Ser397 induces degradation. (PMID: 29682330, PMID: 26039999)

Storage

Storage:

Store at -20°C. Stable for one year after shipment.

Storage Buffer:

PBS with 0.02% sodium azide and 50% glycerol, pH7.3

Aliquoting is unnecessary for -20°C storage

For technical support and original validation data for this product please contact:

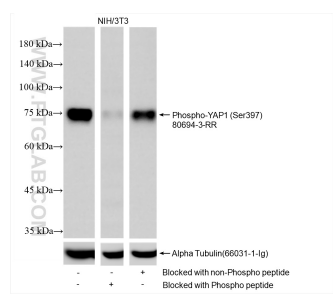
T: 4006900926

E: Proteintech-CN@ptglab.com

W: ptgcn.com

This product is exclusively available under Proteintech Group brand and is not available to purchase from any other manufacturer.

Selected Validation Data



NIH/3T3 cell lysates were subjected to SDS PAGE followed by western blot with 80694-3-RR (Phospho-YAP1 (Ser397) antibody) blocked with BSA only, Phospho-YAP1 (Ser397) peptide or non-Phospho peptide at dilution of 1:3000 incubated at room temperature for 1.5 hours. The membrane was stripped and re-blotted with Alpha Tubulin (66031-1-Ig) antibody as a loading control.