

For Research Use Only

PTPN6 Recombinant monoclonal antibody, PBS Only (Capture)

Catalog Number:80670-4-PBS



Basic Information

Catalog Number:

80670-4-PBS

Source:

Rabbit

Isotype:

IgG

Immunogen Catalog Number:

AG21415

GenBank Accession Number:

BC002523

GeneID (NCBI):

5777

UNIPROT ID:

P29350

Full Name:

protein tyrosine phosphatase, non-receptor type 6

Calculated MW:

597 aa, 68 kDa

Purification Method:

Protein A purification

CloneNo.:

252458D2

Applications

Tested Applications:

Sandwich ELISA, Indirect ELISA

Species Specificity:

human

Background Information

Storage

Storage:

Store at -80°C.

The product is shipped with ice packs. Upon receipt, store it immediately at -80°C

Storage Buffer:

PBS only, pH7.3

For technical support and original validation data for this product please contact:

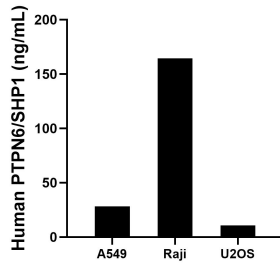
T: 4006900926

E: Proteintech-CN@ptglab.com

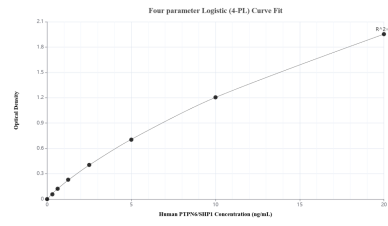
W: ptgcn.com

This product is exclusively available under Proteintech Group brand and is not available to purchase from any other manufacturer.

Selected Validation Data



The mean PTPN6/SHP1 concentration was determined to be 28.33 ng/mL in A549 cell extract based on a 1.20 mg/mL extract load, 164.57 ng/mL in Raji cell extract based on a 1.20 mg/mL extract load and 10.70 ng/mL in U2OS cell extract based on a 1.20 mg/mL extract load.



Sandwich ELISA standard curve of MP02963-1, Human PTPN6/SHP1 Recombinant Matched Antibody Pair - PBS only. 80670-4-PBS was coated to a plate as the capture antibody and incubated with serial dilutions of standard Ag21415. 80670-3-PBS was HRP conjugated as the detection antibody. Range: 0.313-20 ng/mL