

For Research Use Only

# Occludin Recombinant antibody, PBS Only



Catalog Number: 80545-1-PBS

## Basic Information

Catalog Number: 80545-1-PBS	GenBank Accession Number: BC029886	Purification Method: Protein A purification
Size: 1mg/ml	GeneID (NCBI): 4950	CloneNo.: 8B2
Source: Rabbit	UNIPROT ID: Q16625	
Isotype: IgG	Full Name: occludin	
Immunogen Catalog Number: AG26173	Calculated MW: 522 aa, 59 kDa	
	Observed MW: 59 kDa	

## Applications

**Tested Applications:**  
WB, IP, IF, Indirect ELISA

**Species Specificity:**  
Human, Mouse, Pig

## Background Information

Occludin is an integral membrane protein located at the tight junction. It is a tetraspanin protein with four transmembrane domains, intracellular N and C termini and two extracellular loops. Occludin plays a role in the formation and regulation of the tight junction paracellular permeability barrier. Occludin can exist in different isoforms, owing to modifications at the posttranscriptional and posttranslational levels, the monomeric occludin migrates as 53-65 kDa on SDS-PAGE (PMID: 22083955; 19457074).

## Storage

**Storage:**  
Store at -80°C.

**The product is shipped with ice packs. Upon receipt, store it immediately at -80°C**

**Storage Buffer:**  
PBS Only

For technical support and original validation data for this product please contact:

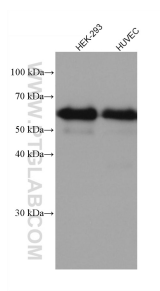
T: 4006900926

E: [Proteintech-CN@ptglab.com](mailto:Proteintech-CN@ptglab.com)

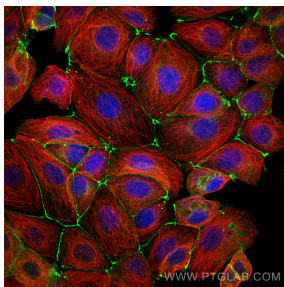
W: [ptgcn.com](http://ptgcn.com)

**This product is exclusively available under Proteintech Group brand and is not available to purchase from any other manufacturer.**

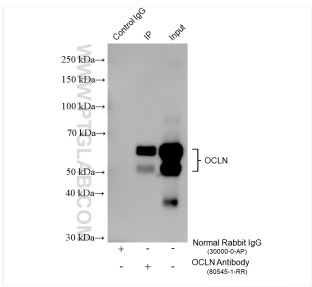
Selected Validation Data



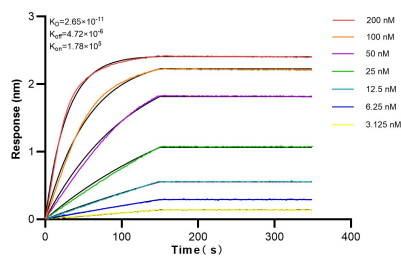
HEK-293 cells were subjected to SDS PAGE followed by western blot with 80545-1-RR (Occludin antibody) at dilution of 1:40000 incubated at room temperature for 1.5 hours. This data was developed using the same antibody clone with 80545-1-PBS in a different storage buffer formulation.



Immunofluorescent analysis of (4% PFA) fixed MCF-7 cells using Occludin antibody (80545-1-RR, Clone: 8B2 ) at dilution of 1:500 and CoraLite®488-Conjugated AffiniPure Goat Anti-Rabbit IgG(H+L), Alpha Tubulin antibody (66031-1-Ig, Clone: 1E4C11, red). This data was developed using the same antibody clone with 80545-1-PBS in a different storage buffer formulation.



IP result of anti-Occludin (IP:80545-1-RR, 4ug; Detection:80545-1-RR 1:15000) with HUVEC cells lysate 1410 ug. This data was developed using the same antibody clone with 80545-1-PBS in a different storage buffer formulation.



Biolayer interferometry (BLI) kinetic assays of 80545-1-RR against Human Occludin were performed. The affinity constant is 26.5 pM.