

For Research Use Only

E-cadherin Recombinant antibody, PBS Only (Capture)

Catalog Number: 80541-5-PBS



Basic Information

Catalog Number: 80541-5-PBS	GenBank Accession Number: BC141838	Purification Method: Protein A purification
Size: 1 mg/ml	GeneID (NCBI): 999	CloneNo.: 240159C10
Source: Rabbit	UNIPROT ID: P12830	
Isotype: IgG	Full Name: cadherin 1, type 1, E-cadherin (epithelial)	
Immunogen Catalog Number: AG14973	Calculated MW: 882 aa, 97 kDa	
	Observed MW: 135 kDa	

Applications

Tested Applications:
WB, IHC, IF/ICC, Cytometric bead array, Indirect ELISA

Species Specificity:
human

Background Information

Cadherins are a family of transmembrane glycoproteins that mediate calcium-dependent cell-cell adhesion and play an important role in the maintenance of normal tissue architecture. E-cadherin (epithelial cadherin), also known as CDH1 (cadherin 1) or CAM 120/80, is a classical member of the cadherin superfamily which also include N-, P-, R-, and B-cadherins. E-cadherin is expressed on the cell surface in most epithelial tissues. The extracellular region of E-cadherin establishes calcium-dependent homophilic trans binding, providing specific interaction with adjacent cells, while the cytoplasmic domain is connected to the actin cytoskeleton through the interaction with p120-, α -, β -, and γ -catenin (plakoglobin). E-cadherin is important in the maintenance of the epithelial integrity, and is involved in mechanisms regulating proliferation, differentiation, and survival of epithelial cell. E-cadherin may also play a role in tumorigenesis. It is considered to be an invasion suppressor protein and its loss is an indicator of high tumor aggressiveness.

Storage

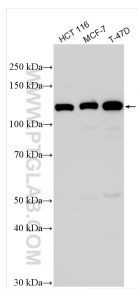
Storage:
Store at -80°C.
The product is shipped with ice packs. Upon receipt, store it immediately at -80°C

Storage Buffer:
PBS Only

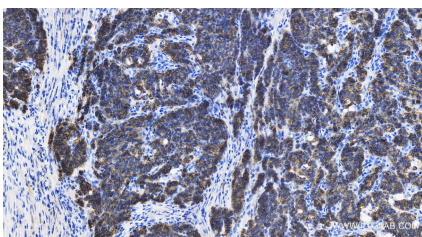
For technical support and original validation data for this product please contact:
T: 4006900926 E: Proteintech-CN@ptglab.com W: ptgcn.com

This product is exclusively available under Proteintech Group brand and is not available to purchase from any other manufacturer.

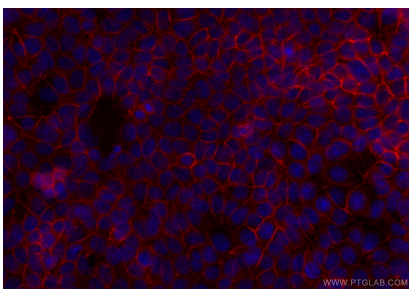
Selected Validation Data



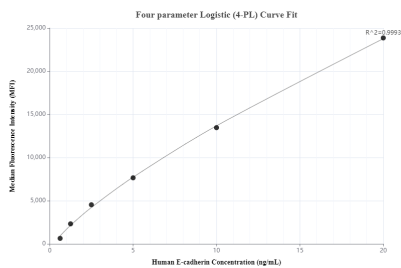
Various lysates were subjected to SDS PAGE followed by western blot with 80541-5-RR (E-cadherin antibody) at dilution of 1:10000 incubated at room temperature for 1.5 hours. This data was developed using the same antibody clone with 80541-5-PBS in a different storage buffer formulation.



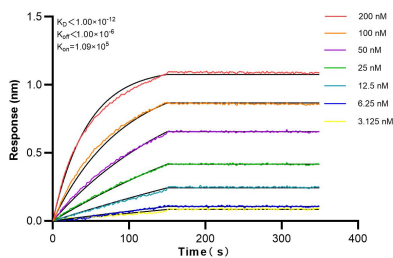
Immunohistochemical analysis of paraffin-embedded human stomach cancer tissue slide using 80541-5-RR (E-cadherin antibody) at dilution of 1:400 (under 40x lens). Heat mediated antigen retrieval with Tris-EDTA buffer (pH 9.0). This data was developed using the same antibody clone with 80541-5-PBS in a different storage buffer formulation.



Immunofluorescent analysis of (-20°C Methanol) fixed MCF-7 cells using E-cadherin antibody (80541-5-RR, Clone: 240159C10) at dilution of 1:500 and CoraLite® 594-Conjugated Goat Anti-Rabbit IgG(H+L) (SA00013-4). This data was developed using the same antibody clone with 80541-5-PBS in a different storage buffer formulation.



Cytometric bead array standard curve of MP00187-1, E-cadherin Recombinant Matched Antibody Pair, PBS Only. Capture antibody: 80541-5-PBS. Detection antibody: 80541-2-PBS. Standard: Ag14973. Range: 0.625-20 ng/mL



Biolayer interferometry (BLI) kinetic assays of 80541-5-RR against Human E-cadherin were performed. The affinity constant is below 1 pM.