

CD31 Recombinant antibody

Catalog Number: 80530-1-RR

Basic Information

Catalog Number: 80530-1-RR	GenBank Accession Number: BC022512	Purification Method: Protein A purification
Size: 1000 µg/ml	GeneID (NCBI): 5175	CloneNo.: 4N13
Source: Rabbit	ENSEMBL Gene ID: ENSG00000261371	Recommended Dilutions: WB 1:5000-1:50000 IF 1:250-1:1000
Isotype: IgG	UNIPROT ID: P16284	
Immunogen Catalog Number: AG1787	Full Name: platelet/endothelial cell adhesion molecule	
	Calculated MW: 83 kDa	
	Observed MW: 130 kDa	

Applications

Tested Applications: IF/ICC, WB, ELISA	Positive Controls:
Species Specificity: Human, Mouse	WB : human peripheral blood platelets, MOLT-4 cells, Jurkat cells
	IF : bEnd.3 cells,

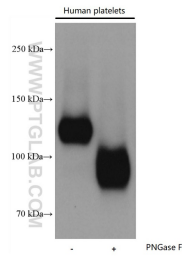
Background Information

Platelet endothelial cell adhesion molecule-1 (PECAM-1, CD31) is a member of the immunoglobulin gene superfamily of cell adhesion molecules. CD31 is a transmembrane glycoprotein that is highly expressed on the surface of the endothelium, making up a large portion of its intracellular junctions. PECAM-1 is also present on the surface of hematopoietic cells and immune cells including platelets, monocytes, neutrophils, natural killer cells, megakaryocytes and some types of T-cell (PMID: 9011572). As well as its role in cell-cell adhesion, PECAM-1 functions as a signaling receptor, and is involved in important physiological events such as nitric oxide production, regulation of T-cell immunity and tolerance, leukocyte transendothelial migration and inflammation and angiogenesis (PMID: 21183735; 20978210; 17872453; 20634489).

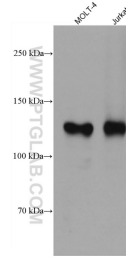
Storage

Storage:
Store at -20°C.
Storage Buffer:
PBS with 0.02% sodium azide and 50% glycerol pH 7.3.
Aliquoting is unnecessary for -20°C storage

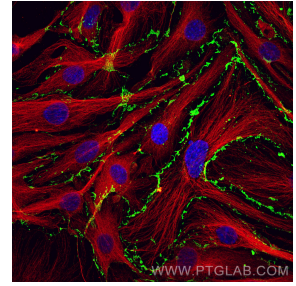
Selected Validation Data



Untreated and PNGase F-treated lysates of human peripheral blood platelets were subjected to SDS PAGE followed by western blot with 80530-1-RR (CD31 antibody) at dilution of 1:20000 incubated at room temperature for 1.5 hours.



Various lysates were subjected to SDS PAGE followed by western blot with 80530-1-RR (CD31 antibody) at dilution of 1:20000 incubated at room temperature for 1.5 hours.



Immunofluorescent analysis of (4% PFA) fixed bEnd.3 cells using CD31 antibody (80530-1-RR, Clone: 4N13) at dilution of 1:500 and CoraLite®488-Conjugated AffiniPure Goat Anti-Rabbit IgG(H+L), Alpha Tubulin antibody (66031-1-Ig, Clone: 1E4C11, red).