

For Research Use Only

TOM20 Recombinant antibody, PBS Only

Catalog Number: 80501-1-PBS



Basic Information

Catalog Number: 80501-1-PBS	GenBank Accession Number: BC000882	Purification Method: Protein A purification
Concentration: 1mg/ml	GeneID (NCBI): 9804	CloneNo.: 1D22
Source: Rabbit	UNIPROT ID: Q15388	
Isotype: IgG	Full Name: translocase of outer mitochondrial membrane 20 homolog (yeast)	
Immunogen Catalog Number: AG2378	Calculated MW: 145 aa, 16 kDa	
	Observed MW: 16 kDa	

Applications

Tested Applications:
WB, IHC, IF/ICC, Indirect ELISA

Species Specificity:
human, mouse, rat, pig, chicken, zebrafish

Background Information

TOM20, also named as KIAA0016, belongs to the Tom20 family. It is a central component of the receptor complex responsible for the recognition and translocation of cytosolically synthesized mitochondrial preproteins. Together with TOM22, TOM20 functions as the transit peptide receptor at the surface of the mitochondrion outer membrane and facilitates the movement of preproteins into the TOM40 translocation pore. TOM20 is characterized as major docking receptors to mediate the recognition by different mechanisms.

Storage

Storage:
Store at -80°C.
The product is shipped with ice packs. Upon receipt, store it immediately at -80°C

Storage Buffer:
PBS only, pH7.3

For technical support and original validation data for this product please contact:

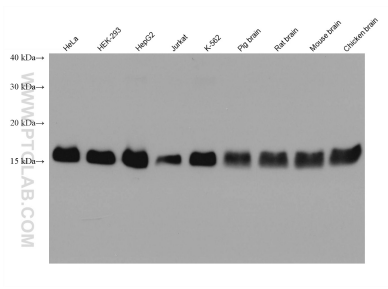
T: 4006900926

E: Proteintech-CN@ptglab.com

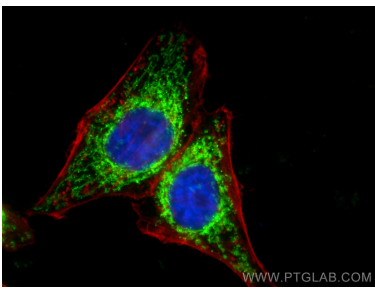
W: ptgcn.com

This product is exclusively available under Proteintech Group brand and is not available to purchase from any other manufacturer.

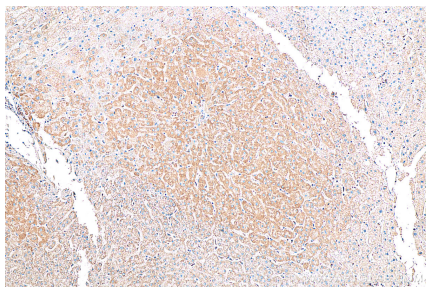
Selected Validation Data



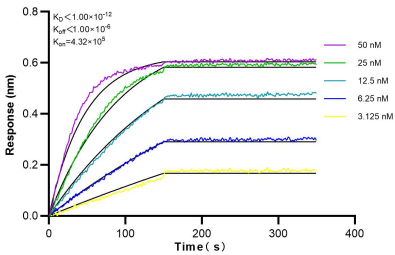
Various lysates were subjected to SDS PAGE followed by western blot with 80501-1-RR (TOM20 antibody) at dilution of 1:5000 incubated at room temperature for 1.5 hours. This data was developed using the same antibody clone with 80501-1-PBS in a different storage buffer formulation.



Immunofluorescent analysis of (4% PFA) fixed HepG2 cells using TOM20 antibody (80501-1-RR, Clone: 1D22) at dilution of 1:200 and CoraLite®488-Conjugated AffiniPure Goat Anti-Rabbit IgG(H+L), CL594-Phalloidin (red). This data was developed using the same antibody clone with 80501-1-PBS in a different storage buffer formulation.



Immunohistochemical analysis of paraffin-embedded human liver tissue slide using 80501-1-RR (TOM20 antibody) at dilution of 1:200 (under 10x lens). Heat mediated antigen retrieval with Tris-EDTA buffer (pH 9.0). This data was developed using the same antibody clone with 80501-1-PBS in a different storage buffer formulation.



Biolayer interferometry (BLI) kinetic assays of 80501-1-RR against Human TOM20 were performed. The affinity constant is below 1 pM.