

For Research Use Only

Phospho-eEF2K (Thr57) Recombinant antibody

Catalog Number: 80351-2-RR



Basic Information

Catalog Number:

80351-2-RR

Concentration:

1000 µg/ml

Source:

Rabbit

Isotype:

IgG

GenBank Accession Number:

BC032665

GeneID (NCBI):

29904

UNIPROT ID:

O00418

Full Name:

eukaryotic elongation factor-2 kinase

Calculated MW:

725 aa, 100 kDa

Observed MW:

100 kDa

Purification Method:

Protein A purification

CloneNo.:

250222A6

Recommended Dilutions:

WB: 1:1000-1:4000

Applications

Tested Applications:

WB, ELISA

Species Specificity:

human

Positive Controls:

WB : HeLa cells,

Background Information

Eukaryotic elongation factor - 2 kinase (eEF2K), well - known to be a Ca²⁺ calmodulin (CaM) - dependent kinase, is overexpressed in several types of malignancies, most notably Triple negative breast cancer (TNBC). Increasing evidence indicates that eEF2K may modulate the expression of some apoptotic proteins such as XIAP, c - FLIPL, Bcl - XL, PI3KCI and p70S6K to inhibit apoptotic process in cancer. On the other hand, it may regulate autophagy involved in AMPK, mTORC1 and ULK1, thereby promoting cancer cell survival. (PMID: 29094413)

Storage

Storage:

Store at -20°C. Stable for one year after shipment.

Storage Buffer:

PBS with 0.02% sodium azide and 50% glycerol, pH7.3

Aliquoting is unnecessary for -20°C storage

For technical support and original validation data for this product please contact:

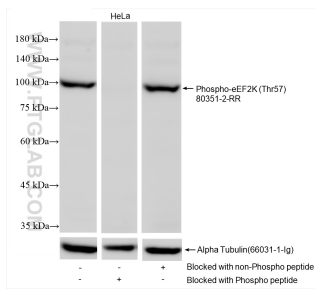
T: 4006900926

E: Proteintech-CN@ptglab.com

W: ptgcn.com

This product is exclusively available under Proteintech Group brand and is not available to purchase from any other manufacturer.

Selected Validation Data



HeLa cell lysates were subjected to SDS PAGE followed by western blot with 80351-2-RR (Phospho-eEF2K (Thr57) antibody) blocked with BSA only, Phospho-eEF2K (Thr57) peptide or non-Phospho peptide at dilution of 1:2000 incubated at room temperature for 1.5 hours. The membrane was stripped and re-blotted with Alpha Tubulin (66031-1-Ig) antibody as a loading control.