

For Research Use Only

# XRCC5 Recombinant antibody, PBS Only (Capture)

Catalog Number: 80325-3-PBS



## Basic Information

Catalog Number:

80325-3-PBS

Size:

1 mg/ml

Source:

Rabbit

Isotype:

IgG

Immunogen Catalog Number:

AG9454

GenBank Accession Number:

BC019027

GeneID (NCBI):

7520

UNIPROT ID:

P13010

Full Name:

X-ray repair complementing defective  
repair in Chinese hamster cells 5  
(double-strand-break rejoining)

Calculated MW:

732 aa, 83 kDa

Purification Method:

Protein A purification

CloneNo.:

240301E10

## Applications

Tested Applications:

Cytometric bead array, Sandwich ELISA, Indirect ELISA,  
Sample test

Species Specificity:

human

## Background Information

### Storage

Storage:

Store at -80°C.

**The product is shipped with ice packs. Upon receipt, store it immediately at -80°C**

Storage Buffer:

PBS Only

For technical support and original validation data for this product please contact:

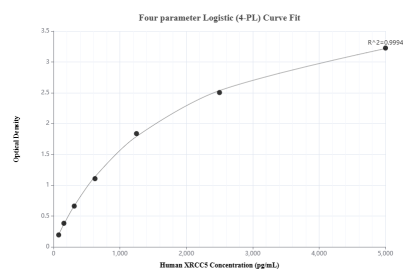
T: 4006900926

E: Proteintech-CN@ptglab.com

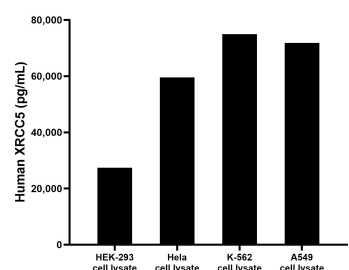
W: ptgcn.com

**This product is exclusively available under Proteintech Group brand and is not available to purchase from any other manufacturer.**

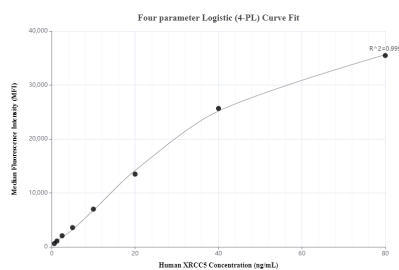
## Selected Validation Data



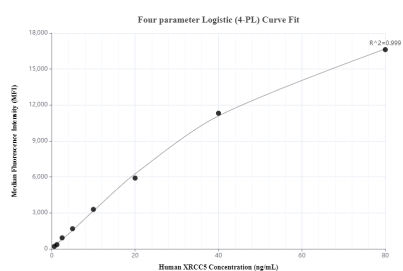
Sandwich ELISA standard curve of MP00384-2, Human XRCC5 Recombinant Matched Antibody Pair - PBS only. 80325-3-PBS was coated to a plate as the capture antibody and incubated with serial dilutions of standard Ag9454. 80325-2-PBS was HRP conjugated as the detection antibody. Range: 78.1-5000 pg/mL



HEK-293, HeLa, K-562 and A549 cell lysates were measured. The human XRCC5 concentration of detected samples was determined to be 27,396.5 pg/mL (based on a 1.20 mg/mL extract load) in HEK-293 cell lysate, 59,588.9 pg/mL (based on a 1.50 mg/mL extract load) in HeLa cell lysate, 74,969.1 pg/mL (based on a 2.10 mg/mL extract load) in K-562 cell lysate and 71,822.7 pg/mL (based on a 1.00 mg/mL extract load) in A549 cell lysate.



Cytometric bead array standard curve of MP00384-2, XRCC5 Recombinant Matched Antibody Pair, PBS Only. Capture antibody: 80325-3-PBS. Detection antibody: 80325-2-PBS. Standard: Ag9454. Range: 0.625-80 ng/mL



Cytometric bead array standard curve of MP00384-3, XRCC5 Recombinant Matched Antibody Pair, PBS Only. Capture antibody: 80325-3-PBS. Detection antibody: 80325-4-PBS. Standard: Ag9454. Range: 0.625-80 ng/mL