

For Research Use Only

# CTSA Recombinant monoclonal antibody, PBS Only (Detector)

Catalog Number:80273-3-PBS



## Basic Information

<b>Catalog Number:</b> 80273-3-PBS	<b>GenBank Accession Number:</b> BC000597	<b>Purification Method:</b> Protein A purification
<b>Source:</b> Rabbit	<b>GeneID (NCBI):</b> 5476	<b>CloneNo.:</b> 251086C2
<b>Isotype:</b> IgG	<b>UNIPROT ID:</b> P10619	
<b>Immunogen Catalog Number:</b> AG7073	<b>Full Name:</b> cathepsin A	
	<b>Calculated MW:</b> 54 kDa	

## Applications

**Tested Applications:**  
Sandwich ELISA, Indirect ELISA

**Species Specificity:**  
human

## Background Information

### Storage

**Storage:**  
Store at -80°C.  
**The product is shipped with ice packs. Upon receipt, store it immediately at -80°C**

**Storage Buffer:**  
PBS only, pH7.3

For technical support and original validation data for this product please contact:

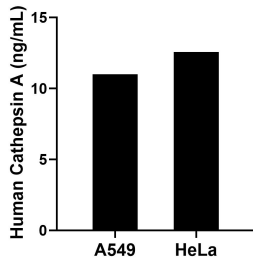
T: 4006900926

E: [Proteintech-CN@ptglab.com](mailto:Proteintech-CN@ptglab.com)

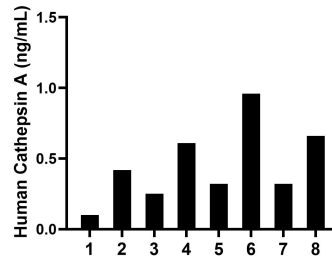
W: [ptgcn.com](http://ptgcn.com)

**This product is exclusively available under Proteintech Group brand and is not available to purchase from any other manufacturer.**

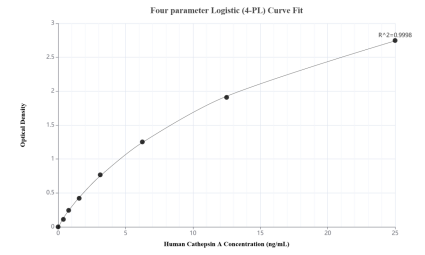
## Selected Validation Data



The mean Cathepsin A concentration was determined to be 10.99 ng/mL in A549 cell extract based on a 1.10 mg/mL extract load and 12.57 ng/mL in HeLa cell extract based on a 1.10 mg/mL extract load.



Serum of eight individual healthy human donors was measured. The Cathepsin A concentration of detected samples was determined to be 0.46 ng/mL with a range of 0.10-0.96 ng/mL.



Sandwich ELISA standard curve of MP02549-1, Human Cathepsin A Recombinant Matched Antibody Pair - PBS only. 80273-2-PBS was coated to a plate as the capture antibody and incubated with serial dilutions of standard Ag7073. 80273-3-PBS was HRP conjugated as the detection antibody. Range: 0.391-25 ng/mL